

Datasheet for ABIN564552  
**anti-TAB1 antibody (AA 3-100)**

## 6 Images

[Go to Product page](#)

## Overview

Quantity:	100 µg
Target:	TAB1
Binding Specificity:	AA 3-100
Reactivity:	Human
Host:	Mouse
Clonality:	Monoclonal
Conjugate:	This TAB1 antibody is un-conjugated
Application:	Western Blotting (WB), ELISA, Immunofluorescence (IF), Proximity Ligation Assay (PLA)

## Product Details

Purpose:	Mouse monoclonal antibody raised against a partial recombinant MAP3K7IP1.
Immunogen:	MAP3K7IP1 (NP_705717.1, 3 a.a. ~ 100 a.a) partial recombinant protein with GST tag. MW of the GST tag alone is 26 KDa.
Sequence:	AQRRSLLQSE QQPSWTDLLP LCHLSGVGSA SNRSYSADGK GTESHPPEDS WLKFRSENNC FLYGVFNQYD GNRVTNFVAQ RLSAELLGQ LNAEHAEA
Clone:	2A12
Isotype:	IgG1
Cross-Reactivity:	Human, Rat
Characteristics:	Antibody Reactive Against Recombinant Protein.

## Target Details

Target:	TAB1
Alternative Name:	MAP3K7IP1 ( <a href="#">TAB1 Products</a> )
Background:	Full Gene Name: mitogen-activated protein kinase kinase kinase 7 interacting protein 1 Synonyms: 3'-Tab1,MGC57664,TAB1
Gene ID:	10454
NCBI Accession:	<a href="#">NM_153497</a>
Pathways:	<a href="#">TLR Signaling</a> , <a href="#">Fc-epsilon Receptor Signaling Pathway</a> , <a href="#">Activation of Innate immune Response</a> , <a href="#">Toll-Like Receptors Cascades</a>

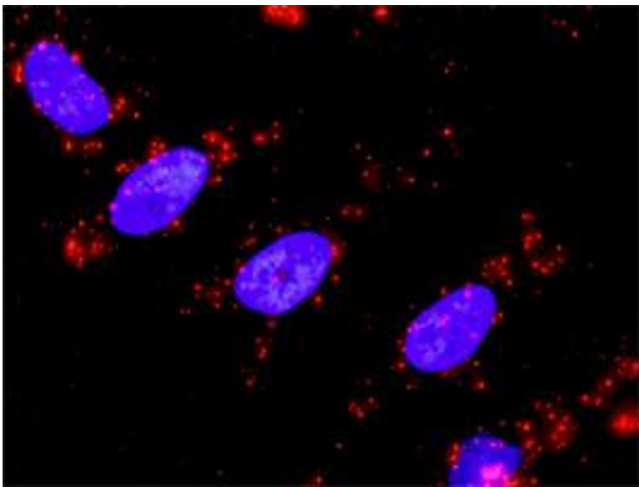
## Application Details

Application Notes:	Optimal working dilution should be determined by the investigator.
Restrictions:	For Research Use only

## Handling

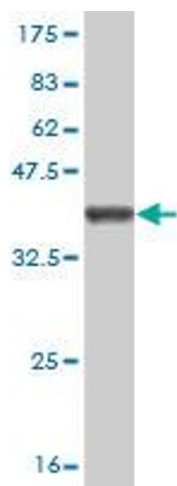
Buffer:	In 1x PBS, pH 7.4
Handling Advice:	Aliquot to avoid repeated freezing and thawing.
Storage:	-20 °C
Storage Comment:	Store at -20°C or lower. Aliquot to avoid repeated freezing and thawing.

## Images



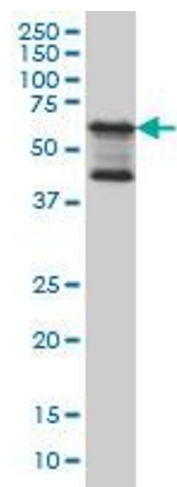
### Proximity Ligation Assay

**Image 1.** Proximity Ligation Analysis of protein-protein interactions between HSPA1L and MAP3K7IP1. HeLa cells were stained with anti-HSPA1L rabbit purified polyclonal 1:1200 and anti-MAP3K7IP1 mouse monoclonal antibody 1:50. Each red dot represents the detection of protein-protein interaction complex, and nuclei were counterstained with DAPI (blue).



#### Western Blotting

**Image 2.** Western Blot detection against Immunogen (36.52 kDa) .



#### Western Blotting

**Image 3.** MAP3K7IP1 monoclonal antibody (M03), clone 2A12 Western Blot analysis of MAP3K7IP1 expression in HeLa .

Please check the [product details page](#) for more images. Overall 6 images are available for ABIN564552.