



Datasheet for ABIN564578
anti-Semaphorin 6C antibody (AA 28-126)



[Go to Product page](#)

1 Image

Overview

Quantity:	50 µL
Target:	Semaphorin 6C (SEMA6C)
Binding Specificity:	AA 28-126
Reactivity:	Human
Host:	Mouse
Clonality:	Polyclonal
Conjugate:	This Semaphorin 6C antibody is un-conjugated
Application:	Western Blotting (WB), ELISA

Product Details

Purpose:	Mouse polyclonal antibody raised against a partial recombinant SEMA6C.
Immunogen:	SEMA6C (NP_112175, 28 a.a. ~ 126 a.a) partial recombinant protein with GST tag.
Sequence:	QDPLPLLI ^{SD} LQGTSP ^{LSWF} RGL ^{EDDAVAA} ELGLDF ^{QRFL} TLNRTLL ^{VAA} RDHVFS ^{FDLQ} AEEEGEGL ^V NKYL ^{TWRSQD} VENCA ^{VRGKL} TDECY ^{NYIR}
Cross-Reactivity:	Human
Characteristics:	Antibody Reactive Against Recombinant Protein.

Target Details

Target:	Semaphorin 6C (SEMA6C)
Alternative Name:	SEMA6C (SEMA6C Products)

Target Details

Background:	Full Gene Name: sema domain, transmembrane domain (TM), and cytoplasmic domain, (semaphorin) 6C Synonyms: SEMAY,m-SemaY,m-SemaY2
Gene ID:	10500
NCBI Accession:	NM_030913

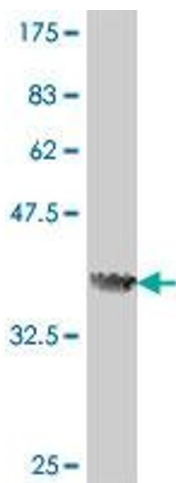
Application Details

Application Notes:	Optimal working dilution should be determined by the investigator.
Restrictions:	For Research Use only

Handling

Format:	Liquid
Buffer:	50 % glycerol
Handling Advice:	Aliquot to avoid repeated freezing and thawing.
Storage:	-20 °C
Storage Comment:	Store at -20°C or lower. Aliquot to avoid repeated freezing and thawing.

Images



Western Blotting

Image 1. Western Blot detection against Immunogen (37 KDa) .