



Datasheet for ABIN564589
anti-HYOU1 antibody (AA 901-999)



[Go to Product page](#)

4 Images

3 Publications

Overview

Quantity:	100 µg
Target:	HYOU1
Binding Specificity:	AA 901-999
Reactivity:	Human
Host:	Mouse
Clonality:	Monoclonal
Conjugate:	This HYOU1 antibody is un-conjugated
Application:	Western Blotting (WB), ELISA, Immunohistochemistry (Paraffin-embedded Sections) (IHC (p))

Product Details

Purpose:	Mouse monoclonal antibody raised against a partial recombinant HYOU1.
Immunogen:	HYOU1 (NP_006380, 901 a.a. ~ 999 a.a) partial recombinant protein with GST tag. MW of the GST tag alone is 26 KDa.
Sequence:	EVQYLLNKAK FTKPRPRPKD KNGTRAEPPL NASASDQGEK VIPPAGQTED AEPISEPEKV ETGSEPGDTE PLELGPGAE PEQKEQSTGQ KRPLKNDEL
Clone:	6F7
Isotype:	IgG1
Cross-Reactivity:	Human
Characteristics:	Antibody Reactive Against Recombinant Protein.

Target Details

Target:	HYOU1
Alternative Name:	HYOU1 (HYOU1 Products)
Background:	Full Gene Name: hypoxia up-regulated 1 Synonyms: DKFZp686N08236,FLJ94899,FLJ97572,Grp170,HSP12A,ORP150
Gene ID:	10525
NCBI Accession:	NM_006389
Pathways:	ER-Nucleus Signaling , SARS-CoV-2 Protein Interactome

Application Details

Application Notes:	Optimal working dilution should be determined by the investigator.
Restrictions:	For Research Use only

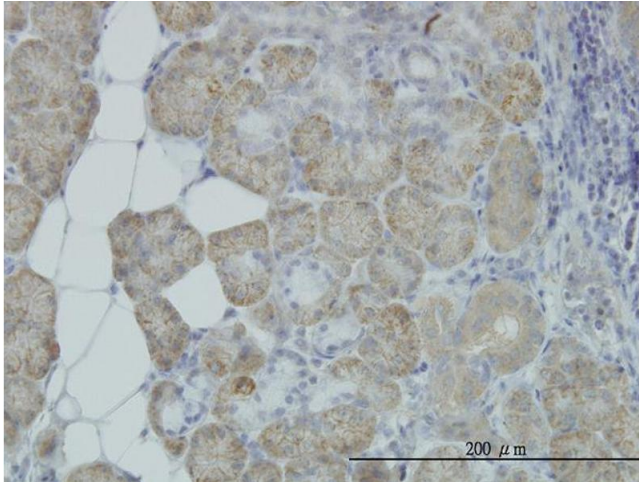
Handling

Buffer:	In 1x PBS, pH 7.4
Handling Advice:	Aliquot to avoid repeated freezing and thawing.
Storage:	-20 °C
Storage Comment:	Store at -20°C or lower. Aliquot to avoid repeated freezing and thawing.

Publications

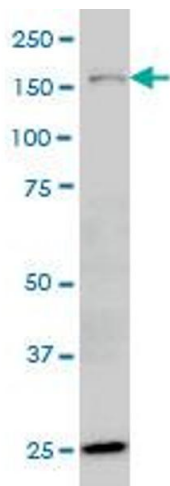
Product cited in:	<p>Yoshida, Yamashita, Nagano, Imai, Nabeshi, Yoshikawa, Yoshioka, Abe, Kamada, Tsutsumi, Tsunoda: "Limited expression of reticulocalbin-1 in lymphatic endothelial cells in lung tumor but not in normal lung." in: Biochemical and biophysical research communications, Vol. 405, Issue 4, pp. 610-4, (2011) (PubMed).</p> <p>Liu, Li, Bai, Zhang, Tang, Lei, Chen, Liang, Zhao, Wei, Huang: "Mechanism of cancer cell adaptation to metabolic stress: proteomics identification of a novel thyroid hormone-mediated gastric carcinogenic signaling pathway." in: Molecular & cellular proteomics : MCP, Vol. 8, Issue 1, pp. 70-85, (2009) (PubMed).</p> <p>Lindenmeyer, Rastaldi, Ikehata, Neusser, Kretzler, Cohen, Schlöndorff: "Proteinuria and hyperglycemia induce endoplasmic reticulum stress." in: Journal of the American Society of</p>
-------------------	--

Images



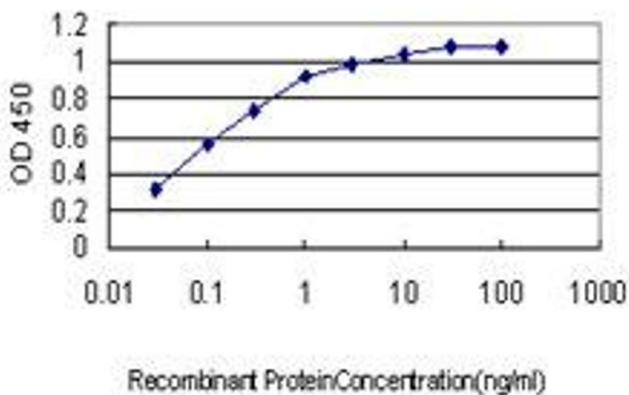
Immunostaining

Image 1. Immunoperoxidase of monoclonal antibody to HYOU1 on formalin-fixed paraffin-embedded human salivary gland. [antibody concentration 1 ug/ml]



Western Blotting

Image 2. HYOU1 monoclonal antibody (M01), clone 6F7 Western Blot analysis of HYOU1 expression in MCF-7 .



ELISA

Image 3. Detection limit for recombinant GST tagged HYOU1 is approximately 0.03ng/ml as a capture antibody.

Please check the [product details page](#) for more images. Overall 4 images are available for ABIN564589.