



[Go to Product page](#)

Datasheet for ABIN564609
anti-RPP38 antibody (AA 141-250)

1 Image

Overview

Quantity:	50 µL
Target:	RPP38
Binding Specificity:	AA 141-250
Reactivity:	Human
Host:	Mouse
Clonality:	Polyclonal
Conjugate:	This RPP38 antibody is un-conjugated
Application:	Western Blotting (WB), ELISA

Product Details

Purpose:	Mouse polyclonal antibody raised against a partial recombinant RPP38.
Immunogen:	RPP38 (NP_892117, 141 a.a. ~ 250 a.a) partial recombinant protein with GST tag.
Sequence:	AMITSHLIQL SLRSVPACQ VPRLSERIAP VIGLKCVLAL AFKKNTTDFV DEVRAIIPRV PSLSVPWLQD RIEDSGENLE TEPLSQDRE LLDTSFEDLS KPKRKLADGR
Cross-Reactivity:	Human
Characteristics:	Antibody Reactive Against Recombinant Protein.

Target Details

Target:	RPP38
Alternative Name:	RPP38 (RPP38 Products)

Target Details

Background:	Full Gene Name: ribonuclease P/MRP 38 kDa subunit Synonyms: RP11-455B2.5
Gene ID:	10557
NCBI Accession:	NM_183005

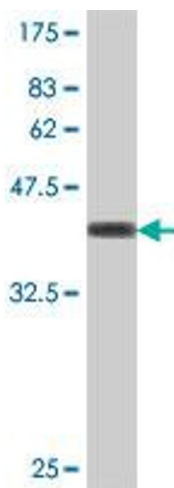
Application Details

Application Notes:	Optimal working dilution should be determined by the investigator.
Restrictions:	For Research Use only

Handling

Format:	Liquid
Buffer:	50 % glycerol
Handling Advice:	Aliquot to avoid repeated freezing and thawing.
Storage:	-20 °C
Storage Comment:	Store at -20°C or lower. Aliquot to avoid repeated freezing and thawing.

Images



Western Blotting

Image 1. Western Blot detection against Immunogen (38.21 kDa).