



[Go to Product page](#)

Datasheet for ABIN564624

anti-SLC01B1 antibody (AA 481-570)

1 Image

Overview

| | |
|----------------------|--|
| Quantity: | 50 µL |
| Target: | SLC01B1 |
| Binding Specificity: | AA 481-570 |
| Reactivity: | Human |
| Host: | Mouse |
| Clonality: | Polyclonal |
| Conjugate: | This SLC01B1 antibody is un-conjugated |
| Application: | Western Blotting (WB), ELISA |

Product Details

| | |
|-------------------|---|
| Purpose: | Mouse polyclonal antibody raised against a partial recombinant SLC01B1. |
| Immunogen: | SLC01B1 (NP_006437, 481 a.a. ~ 570 a.a) partial recombinant protein with GST tag. |
| Sequence: | YISPCLAGCK SSSGNKKPIV FYNCSCLEVT GLQNRNYSAH LGECPRDDAC TRKFYFFVAI QVLNLFFSAL GGTSHVMLIV KIVQPELKSL |
| Cross-Reactivity: | Human |
| Characteristics: | Antibody Reactive Against Recombinant Protein. |

Target Details

| | |
|-------------------|--|
| Target: | SLC01B1 |
| Alternative Name: | SLC01B1 (SLC01B1 Products) |

Target Details

| | |
|-----------------|--|
| Background: | Full Gene Name: solute carrier organic anion transporter family, member 1B1 Synonyms: LST-1,LST1,MGC133282,OATP-C,OATP1B1,OATP2,OATPC,SLC21A6 |
| Gene ID: | 10599 |
| NCBI Accession: | NM_006446 |

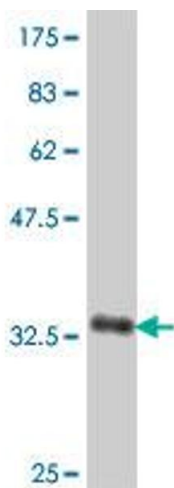
Application Details

| | |
|--------------------|--|
| Application Notes: | Optimal working dilution should be determined by the investigator. |
| Restrictions: | For Research Use only |

Handling

| | |
|------------------|--|
| Format: | Liquid |
| Buffer: | 50 % glycerol |
| Handling Advice: | Aliquot to avoid repeated freezing and thawing. |
| Storage: | -20 °C |
| Storage Comment: | Store at -20°C or lower. Aliquot to avoid repeated freezing and thawing. |

Images



Western Blotting

Image 1. Western Blot detection against Immunogen (36.01 KDa) .