

Datasheet for ABIN564659  
**anti-Claudin 16 antibody (AA 1-73)**



[Go to Product page](#)

2 Images

## Overview

Quantity:	50 µL
Target:	Claudin 16 (CLDN16)
Binding Specificity:	AA 1-73
Reactivity:	Human
Host:	Mouse
Clonality:	Polyclonal
Conjugate:	This Claudin 16 antibody is un-conjugated
Application:	Western Blotting (WB), ELISA

## Product Details

Purpose:	Mouse polyclonal antibody raised against a partial recombinant CLDN16.
Immunogen:	CLDN16 (NP_006571, 1 a.a. ~ 73 a.a) partial recombinant protein with GST tag.
Sequence:	MTSRTPLLVT ACLYYSYCNS RHLQQGVRKS KRPVFSHCQV PETQKTDTRH LSGARAGVCP CCHPDGLLAT MRD
Cross-Reactivity:	Human
Characteristics:	Antibody Reactive Against Recombinant Protein.

## Target Details

Target:	Claudin 16 (CLDN16)
Alternative Name:	CLDN16 ( <a href="#">CLDN16 Products</a> )

## Target Details

Background: Full Gene Name: claudin 16  
Synonyms: HOMG3,PCLN1

Gene ID: 10686

NCBI Accession: [NM\\_006580](#)

Pathways: [Hepatitis C](#)

## Application Details

Application Notes: Optimal working dilution should be determined by the investigator.

Restrictions: For Research Use only

## Handling

Format: Liquid

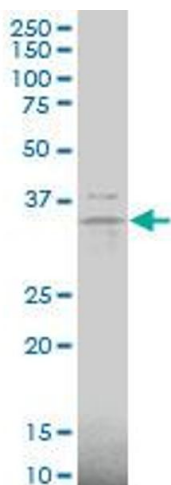
Buffer: 50 % glycerol

Handling Advice: Aliquot to avoid repeated freezing and thawing.

Storage: -20 °C

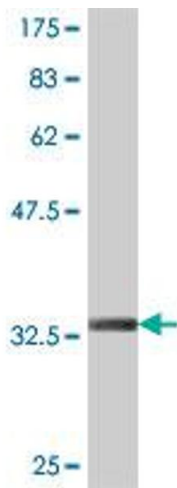
Storage Comment: Store at -20°C or lower. Aliquot to avoid repeated freezing and thawing.

## Images



### Western Blotting

**Image 1.** CLDN16 polyclonal antibody (A01), Lot # 060614JCS1. Western Blot analysis of CLDN16 expression in Daoy.



### Western Blotting

**Image 2.** Western Blot detection against Immunogen (34.14 KDa).