



[Go to Product page](#)

Datasheet for ABIN564663

anti-Corin antibody (AA 616-715)

2 Images

Overview

Quantity:	100 µg
Target:	Corin (CORIN)
Binding Specificity:	AA 616-715
Reactivity:	Human
Host:	Mouse
Clonality:	Monoclonal
Conjugate:	This Corin antibody is un-conjugated
Application:	Western Blotting (WB), ELISA

Product Details

Purpose:	Mouse monoclonal antibody raised against a partial recombinant CORIN.
Immunogen:	CORIN (NP_006578, 616 a.a. ~ 715 a.a) partial recombinant protein with GST tag. MW of the GST tag alone is 26 KDa.
Sequence:	CKERDLWECP SNKQCLKHTV ICDGFPCPD YMDEKNCSCFC QDDELECANH ACVSRDLWCD GEADCSDSSD EWDCVTLIN VNSSSFLMVH RAATEHHVCA
Clone:	5B6
Isotype:	IgG1
Cross-Reactivity:	Human
Characteristics:	Antibody Reactive Against Recombinant Protein.

Target Details

Target:	Corin (CORIN)
Alternative Name:	CORIN (CORIN Products)
Background:	Full Gene Name: corin, serine peptidase Synonyms: ATC2,CRN,Lrp4,MGC119742,TMPRSS10
Gene ID:	10699
NCBI Accession:	NM_006587
Pathways:	Regulation of Systemic Arterial Blood Pressure by Hormones

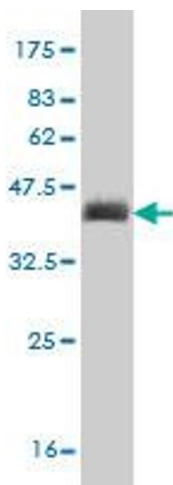
Application Details

Application Notes:	Optimal working dilution should be determined by the investigator.
Restrictions:	For Research Use only

Handling

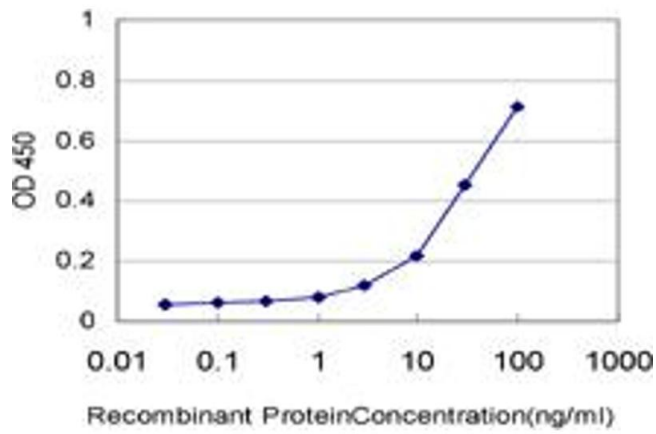
Buffer:	In 1x PBS, pH 7.4
Handling Advice:	Aliquot to avoid repeated freezing and thawing.
Storage:	-20 °C
Storage Comment:	Store at -20°C or lower. Aliquot to avoid repeated freezing and thawing.

Images



Western Blotting

Image 1. Western Blot detection against Immunogen (36.74 KDa) .



ELISA

Image 2. Detection limit for recombinant GST tagged CORIN is approximately 3ng/ml as a capture antibody.