



[Go to Product page](#)

Datasheet for ABIN564687

anti-CHL1 antibody (AA 26-135)

2 Images

2 Publications

Overview

Quantity:	50 µL
Target:	CHL1
Binding Specificity:	AA 26-135
Reactivity:	Human
Host:	Mouse
Clonality:	Polyclonal
Conjugate:	This CHL1 antibody is un-conjugated
Application:	Western Blotting (WB), ELISA

Product Details

Purpose:	Mouse polyclonal antibody raised against a partial recombinant CHL1.
Immunogen:	CHL1 (NP_006605, 26 a.a. ~ 135 a.a) partial recombinant protein with GST tag.
Sequence:	EIPSSVQQVP TIIKQSKVQV AAFPDEYFQI ECEAKGNPEP TFSWTKDGNP FYFTDHRIP SNNSGTFRIP NEGHISHFQG KYRCFASNKL GIAMSEEIEF IVPSVPKFPK
Cross-Reactivity:	Human
Characteristics:	Antibody Reactive Against Recombinant Protein.

Target Details

Target:	CHL1
Alternative Name:	CHL1 (CHL1 Products)

Target Details

Background:	Full Gene Name: cell adhesion molecule with homology to L1CAM (close homolog of L1) Synonyms: CALL,FLJ44930,L1CAM2,MGC132578
Gene ID:	10752
NCBI Accession:	NM_006614

Application Details

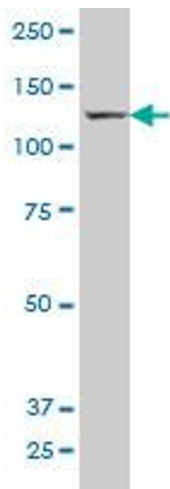
Application Notes:	Optimal working dilution should be determined by the investigator.
Restrictions:	For Research Use only

Handling

Format:	Liquid
Buffer:	50 % glycerol
Handling Advice:	Aliquot to avoid repeated freezing and thawing.
Storage:	-20 °C
Storage Comment:	Store at -20°C or lower. Aliquot to avoid repeated freezing and thawing.

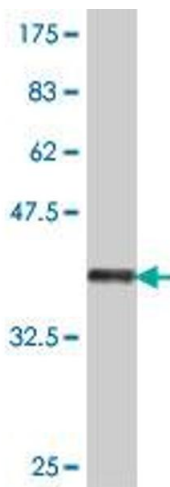
Publications

Product cited in:	<p>Huang, Zhu, Zhao, Wu, Wu, Schachner, Xiao, Fan: "CHL1 negatively regulates the proliferation and neuronal differentiation of neural progenitor cells through activation of the ERK1/2 MAPK pathway." in: Molecular and cellular neurosciences, Vol. 46, Issue 1, pp. 296-307, (2011) (PubMed).</p> <p>Ye, Tan, Ponniah, Takeda, Wang, Schachner, Watanabe, Pallen, Xiao: "Neural recognition molecules CHL1 and NB-3 regulate apical dendrite orientation in the neocortex via PTP alpha." in: The EMBO journal, Vol. 27, Issue 1, pp. 188-200, (2008) (PubMed).</p>
-------------------	---



Western Blotting

Image 1. CHL1 polyclonal antibody (A01), Lot # SAC4060428QCS1 Western Blot analysis of CHL1 expression in Jurkat .



Western Blotting

Image 2. Western Blot detection against Immunogen (38.21 kDa) .