

Datasheet for ABIN5646938

anti-S100B antibody[Go to Product page](#)**4** Images

Overview

Quantity:	100 µg
Target:	S100B
Reactivity:	Human, Rat, Mouse, Cow
Host:	Mouse
Clonality:	Monoclonal
Conjugate:	This S100B antibody is un-conjugated
Application:	Western Blotting (WB), Immunofluorescence (IF), Flow Cytometry (FACS), Immunohistochemistry (Paraffin-embedded Sections) (IHC (p))

Product Details

Immunogen:	Recombinant full-length human protein was used as the immunogen for the S100 beta antibody.
Clone:	S100B-1012
Isotype:	IgG2a kappa
Purification:	Purified
Purity:	Protein G affinity chromatography

Target Details

Target:	S100B
Alternative Name:	S100B (S100B Products)

Target Details

Background: S100 belongs to the family of calcium binding proteins. S100 alpha and S100 beta proteins are two members of the S100 family. S100A is composed of an alpha and a beta chain whereas S100B is composed of two beta chains. This antibody is specific against an epitope located on the beta-chain (i.e. in S100A and S100B) but not on the alpha-chain of S100 (i.e. in S100A and S100A0). This antibody can be used to localize S100A and S100B in various tissue sections. S100 protein has been found in normal melanocytes, Langerhans cells, histiocytes, chondrocytes, lipocytes, skeletal and cardiac muscle, Schwann cells, epithelial and myoepithelial cells of the breast, salivary and sweat glands, as well as in glial cells. Neoplasms derived from these cells also express S100 protein, albeit non-uniformly. A large number of well-differentiated tumors of the salivary gland, adipose and cartilaginous tissue, and Schwann cell-derived tumors express S100 protein. Almost all malignant melanomas and cases of histiocytosis X are positive for S100 protein.

Pathways: [Regulation of Muscle Cell Differentiation](#), [Positive Regulation of Immune Effector Process](#), [Toll-Like Receptors Cascades](#), [Regulation of long-term Neuronal Synaptic Plasticity](#), [S100 Proteins](#)

Application Details

Application Notes: Optimal dilution of the S100 beta antibody should be determined by the researcher.

1. The prediluted format is supplied in a dropper bottle and is optimized for use in IHC. After epitope retrieval step (if required), drip mAb solution onto the tissue section and incubate at RT for 30 min. \. Flow Cytometry: 0.5-1 µg/million cells in 0.1ml, Immunofluorescence: 1-2 µg/mL, Western blot: 0.5-1 µg/mL, Immunohistochemistry (FFPE): 0.25-0.5 µg/mL for 30 min at RT, Prediluted IHC only format: incubate for 30 min at RT (1)

Restrictions: For Research Use only

Handling

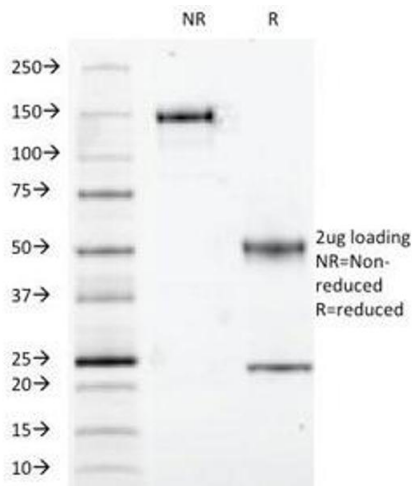
Concentration: 1 mg/mL

Buffer: 1 mg/mL in 1X PBS, BSA free, sodium azide free

Preservative: Azide free

Storage: 4 °C, -20 °C

Storage Comment: Store the S100 beta antibody at 2-8°C (with azide) or aliquot and store at -20°C or colder (without azide).



SDS-PAGE

Image 1. SDS-PAGE Analysis of Purified, BSA-Free S100 beta Antibody (clone S100B/1012). Confirmation of Integrity and Purity of the Antibody.

Human Protein Microarray Specificity Validation



Microarray

Image 2. Analysis of HuProt(TM) microarray containing more than 19,000 full-length human proteins using S100 beta antibody (clone S100B/1012). Z- and S- score: The Z-score represents the strength of a signal that an antibody (in combination with a fluorescently-tagged anti-IgG secondary Ab) produces when binding to a particular protein on the HuProt(TM) array. Z-scores are described in units of standard deviations (SD's) above the mean value of all signals generated on that array. If the targets on the HuProt(TM) are arranged in descending order of the Z-score, the S-score is the difference (also in units of SD's) between the Z-scores. The S-score therefore represents the relative target specificity of an Ab to its intended target.



Immunohistochemistry

Image 3. IHC testing of FFPE human schwannoma with S100 beta antibody (clone S100B/1012). Required HIER: boil tissue sections in 10mM citrate buffer, pH 6, for 10-20 min followed by cooling at RT for 20 min.

Please check the [product details page](#) for more images. Overall 4 images are available for ABIN5646938.