



[Go to Product page](#)

Datasheet for ABIN564695

## anti-AHCYL1 antibody (AA 1-101)

5 Images

1 Publication

### Overview

Quantity:	100 µg
Target:	AHCYL1
Binding Specificity:	AA 1-101
Reactivity:	Human
Host:	Mouse
Clonality:	Monoclonal
Conjugate:	This AHCYL1 antibody is un-conjugated
Application:	Western Blotting (WB), ELISA, Immunohistochemistry (Paraffin-embedded Sections) (IHC (p))

### Product Details

Purpose:	Mouse monoclonal antibody raised against a partial recombinant AHCYL1.
Immunogen:	AHCYL1 (NP_006612, 1 a.a. ~ 101 a.a) partial recombinant protein with GST tag. MW of the GST tag alone is 26 KDa.
Sequence:	MSMPDAMPLP GVGEEKQAK EIEDAEKYSF MATVTKAPKK QIQFADDMQE FTKFPTKTGR RSLRSISQS STDSYSSAAS YTDSSDDEVS PREKQQTNSK G
Clone:	5D6
Isotype:	IgG2b
Cross-Reactivity:	Human
Characteristics:	Antibody Reactive Against Recombinant Protein.

## Target Details

---

Target:	AHCYL1
Alternative Name:	AHCYL1 ( <a href="#">AHCYL1 Products</a> )
Background:	Full Gene Name: S-adenosylhomocysteine hydrolase-like 1 Synonyms: DCAL,IRBIT,PRO0233,XPVKONA
Gene ID:	10768
NCBI Accession:	<a href="#">NM_006621</a>

## Application Details

---

Application Notes:	Optimal working dilution should be determined by the investigator.
Restrictions:	For Research Use only

## Handling

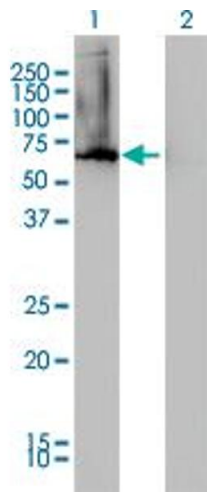
---

Buffer:	In 1x PBS, pH 7.4
Handling Advice:	Aliquot to avoid repeated freezing and thawing.
Storage:	-20 °C
Storage Comment:	Store at -20°C or lower. Aliquot to avoid repeated freezing and thawing.

## Publications

---

Product cited in:	Scicchitano, Dalmas, Boyce, Thomas, Frazier: "Protein extraction of formalin-fixed, paraffin-embedded tissue enables robust proteomic profiles by mass spectrometry." in: <b>The journal of histochemistry and cytochemistry : official journal of the Histochemistry Society</b> , Vol. 57, Issue 9, pp. 849-60, (2009) ( <a href="#">PubMed</a> ).
-------------------	--

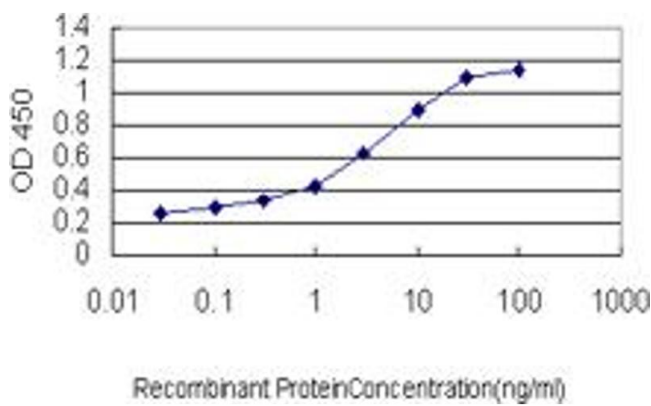


### Western Blotting

**Image 1.** Western Blot analysis of AHCYL1 expression in transfected 293T cell line by AHCYL1 monoclonal antibody (M05), clone 5D6.

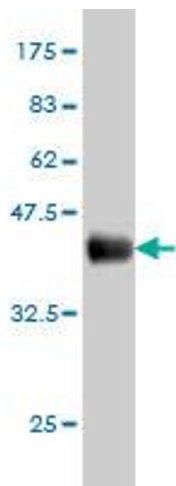
Lane 1: AHCYL1 transfected lysate(69 KDa).

Lane 2: Non-transfected lysate.



### ELISA

**Image 2.** Detection limit for recombinant GST tagged AHCYL1 is approximately 0.1ng/ml as a capture antibody.



### Western Blotting

**Image 3.** Western Blot detection against Immunogen (36.85 KDa) .

Please check the [product details page](#) for more images. Overall 5 images are available for ABIN564695.