

Datasheet for ABIN5646974
anti-YPEL3 antibody (AA 69-101)[Go to Product page](#)

1 Image

Overview

Quantity:	0.05 mL
Target:	YPEL3
Binding Specificity:	AA 69-101
Reactivity:	Mouse, Rat
Host:	Rabbit
Clonality:	Polyclonal
Application:	Western Blotting (WB)

Product Details

Immunogen:	A portion of amino acids 69-101 from the mouse protein was used as the immunogen for the YPEL3 antibody.
Isotype:	Ig Fraction
Cross-Reactivity (Details):	Expected species reactivity: Human,Bovine
Purification:	Antigen affinity purified

Target Details

Target:	YPEL3
Alternative Name:	YPEL3 / Yippee-like 3 (YPEL3 Products)
Background:	Yippee-like 3 is involved in proliferation and apoptosis in myeloid precursor cells.
Gene ID:	83719

Target Details

UniProt: [P61236](#)

Application Details

Application Notes: Western blot: 1:1000-2000

Restrictions: For Research Use only

Handling

Buffer: In 1X PBS, pH 7.4, with 0.09 % sodium azide

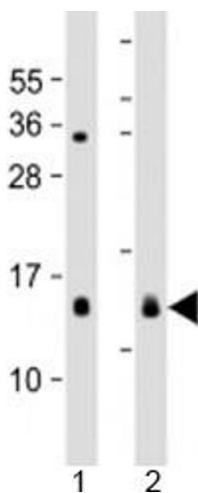
Preservative: Sodium azide

Precaution of Use: This product contains Sodium azide: a POISONOUS AND HAZARDOUS SUBSTANCE which should be handled by trained staff only.

Storage: -20 °C

Storage Comment: Aliquot the YPEL3 antibody and store frozen at -20°C or colder. Avoid repeated freeze-thaw cycles.

Images



Western Blotting

Image 1. Western blot testing of 1) mouse heart and 2) rat spleen lysate with YPEL3 antibody at 1:2000. Predicted molecular weight: 14 kDa.