

Datasheet for ABIN5646980  
**anti-VEGFR2/CD309 antibody**



[Go to Product page](#)

4 Images

## Overview

Quantity:	100 µg
Target:	VEGFR2/CD309 (VEGFR2)
Reactivity:	Human
Host:	Rabbit
Clonality:	Polyclonal
Conjugate:	This VEGFR2/CD309 antibody is un-conjugated
Application:	Western Blotting (WB), Immunohistochemistry (Paraffin-embedded Sections) (IHC (p)), ELISA (Capture)

## Product Details

Immunogen:	A recombinant human protein corresponding to amino acids A20-L242 was used as the immunogen for the VEGFR2 antibody.
Isotype:	IgG
Purification:	Antigen affinity purified

## Target Details

Target:	VEGFR2/CD309 (VEGFR2)
Alternative Name:	VEGF Receptor 2 / VEGFR2 / KDR ( <a href="#">VEGFR2 Products</a> )
Background:	KDR (Kinase Insert Domain Receptor), also known as FLK1, VEGFR or VEGFR2, is a VEGF receptor. KDR is the human gene encoding it. Vascular endothelial growth factor (VEGF) is the only mitogen that specifically acts on endothelial cells. Its expression is upregulated by hypoxia,

## Target Details

and its cell-surface receptor, known as fetal liver kinase-1 (Flk1) in mouse, is exclusively expressed in endothelial cells. Flk1 is the mouse homolog of KDR.

UniProt:	<a href="#">P35968</a>
Pathways:	<a href="#">RTK Signaling</a> , <a href="#">Glycosaminoglycan Metabolic Process</a> , <a href="#">Signaling Events mediated by VEGFR1 and VEGFR2</a> , <a href="#">Growth Factor Binding</a> , <a href="#">Regulation of long-term Neuronal Synaptic Plasticity</a> , <a href="#">VEGF Signaling</a>

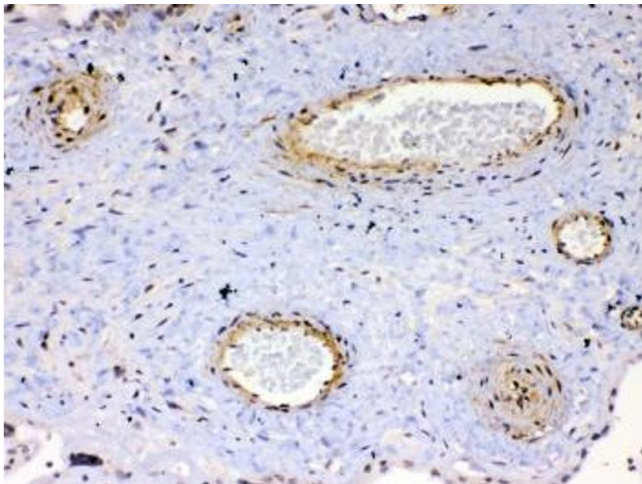
## Application Details

Application Notes:	Optimal dilution of the VEGFR2 antibody should be determined by the researcher.\. Western Blot: 0.5-1 µg/mL,IHC (FFPE): 1-2 µg/mL,ELISA (Capture, recombinant human protein): 0.1-0.5 µg/mL (BSA-free format available)
Restrictions:	For Research Use only

## Handling

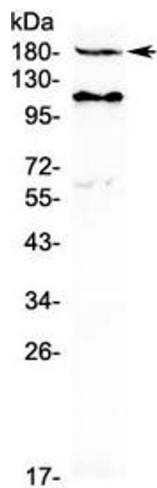
Buffer:	0.5 mg/mL if reconstituted with 0.2 mL sterile DI water
Storage:	-20 °C
Storage Comment:	After reconstitution, the VEGFR2 antibody can be stored for up to one month at 4°C. For long-term, aliquot and store at -20°C. Avoid repeated freezing and thawing.

## Images



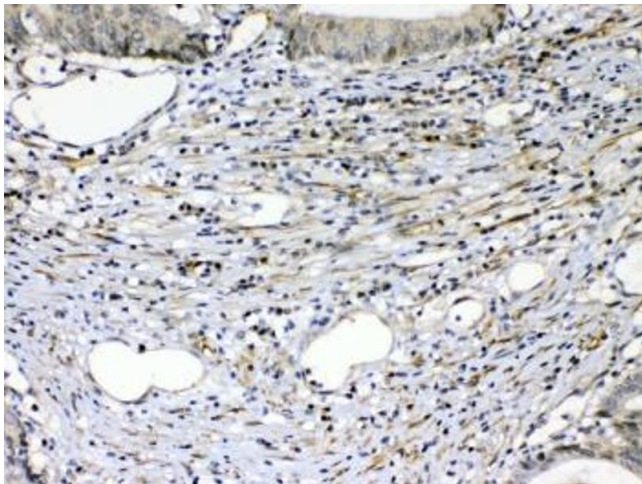
### Immunohistochemistry

**Image 1.** IHC testing of FFPE human placenta tissue with VEGFR2 antibody at 1ug/ml. Required HIER: steam section in pH6 citrate buffer for 20 min and allow to cool prior to testing.



#### Western Blotting

**Image 2.** Western blot testing of human MCF7 cell lysate with VEGFR2 antibody at 0.5ug/ml. Predicted molecular weight: ~152 (immature), 180-200 kDa (intermediate) and 220-230 kDa (mature).



#### Immunohistochemistry

**Image 3.** IHC testing of FFPE human intestinal cancer tissue with VEGFR2 antibody at 1ug/ml. Required HIER: steam section in pH6 citrate buffer for 20 min and allow to cool prior to testing.

Please check the [product details page](#) for more images. Overall 4 images are available for ABIN5646980.