

Datasheet for ABIN5647015

anti-ALDH1B1 antibody (AA 116-156)[Go to Product page](#)**1** Image

Overview

Quantity:	100 µg
Target:	ALDH1B1
Binding Specificity:	AA 116-156
Reactivity:	Human, Rat, Mouse
Host:	Rabbit
Clonality:	Polyclonal
Conjugate:	This ALDH1B1 antibody is un-conjugated
Application:	Western Blotting (WB)

Product Details

Immunogen:	Amino acids 116-156 (RVYLASLETLDNGKPFQESYALDLDEVIKVYRYFAGWADKW from the human protein were used as the immunogen for the ALDH1B1 antibody.
Isotype:	IgG
Purification:	Antigen affinity purified

Target Details

Target:	ALDH1B1
Alternative Name:	ALDH1B1 (ALDH1B1 Products)
Background:	Aldehyde dehydrogenase X, mitochondrial is an enzyme that in humans is encoded by the ALDH1B1 gene. This protein belongs to the aldehyde dehydrogenases family of proteins. Aldehyde dehydrogenase is the second enzyme of the major oxidative pathway of alcohol

Target Details

metabolism. This gene does not contain introns in the coding sequence. The variation of this locus may affect the development of alcohol-related problems.

UniProt: [P30837](#)

Application Details

Application Notes: Western blot: 0.5-1 µg/mL

Restrictions: For Research Use only

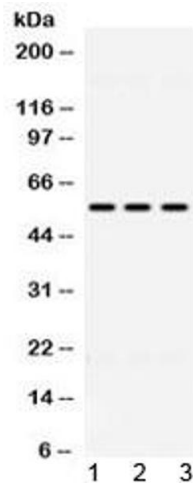
Handling

Buffer: 0.5 mg/mL if reconstituted with 0.2 mL sterile DI water

Storage: -20 °C

Storage Comment: After reconstitution, the ALDH1B1 antibody can be stored for up to one month at 4°C. For long-term, aliquot and store at -20°C. Avoid repeated freezing and thawing.

Images



Western Blotting

Image 1. Western blot testing of 1) rat liver, 2) mouse liver and 3) human HeLa lysate with ALDH1B1 antibody at 0.5ug/ml. Predicted/observed molecular weight ~57 kDa.