

Datasheet for ABIN5647049  
**anti-TUB antibody (AA 395-429)**



[Go to Product page](#)

1 Image

## Overview

Quantity:	100 µg
Target:	TUB
Binding Specificity:	AA 395-429
Reactivity:	Human
Host:	Rabbit
Clonality:	Polyclonal
Application:	Western Blotting (WB)

## Product Details

Immunogen:	Amino acids 395-429 (VHERVSIRPRNEHETLLARWQNKNTESIIELQNKT) from the human protein were used as the immunogen for the Tubby antibody.
Isotype:	IgG
Purification:	Antigen affinity purified

## Target Details

Target:	TUB
Alternative Name:	Tubby ( <a href="#">TUB Products</a> )
Background:	Tubby protein homolog is a protein that in humans is encoded by the TUB gene. This gene encodes a member of the Tubby family of bipartite transcription factors. The encoded protein may play a role in obesity and sensorineural degradation. The crystal structure has been determined for a similar protein in mouse, and it functions as a membrane-bound transcription

## Target Details

regulator that translocates to the nucleus in response to phosphoinositide hydrolysis. Two transcript variants encoding distinct isoforms have been identified for this gene.

UniProt: [P50607](#)

Pathways: [RTK Signaling, Sensory Perception of Sound](#)

## Application Details

Application Notes: Optimal dilution of the Tubby antibody should be determined by the researcher.\. WB: 0.5-1 µg/mL

Restrictions: For Research Use only

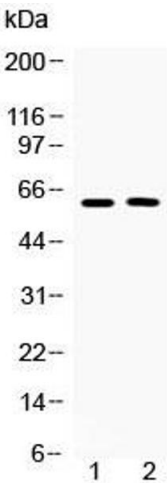
## Handling

Buffer: 0.5 mg/mL if reconstituted with 0.2 mL sterile DI water

Storage: -20 °C

Storage Comment: After reconstitution, the Tubby antibody can be stored for up to one month at 4°C. For long-term, aliquot and store at -20°C. Avoid repeated freezing and thawing.

## Images



### Western Blotting

**Image 1.** Western blot testing of human 1) COLO320 and 2) MCF7 cell lysate with Tubby antibody at 0.5ug/ml. Predicted molecular weight ~56/62 kDa (isoforms 1/2).