

Datasheet for ABIN5647099  
**anti-INTS6 antibody (AA 135-167)**



[Go to Product page](#)

1 Image

## Overview

Quantity:	0.05 mL
Target:	INTS6
Binding Specificity:	AA 135-167
Reactivity:	Human
Host:	Rabbit
Clonality:	Polyclonal
Conjugate:	This INTS6 antibody is un-conjugated
Application:	Western Blotting (WB)

## Product Details

Immunogen:	A portion of amino acids 135-167 from the human protein was used as the immunogen for the INTS6 antibody.
Isotype:	Ig Fraction
Cross-Reactivity (Details):	Expected species reactivity: Mouse
Purification:	Antigen affinity purified

## Target Details

Target:	INTS6
Alternative Name:	INTS6 / DICE1 ( <a href="#">INTS6 Products</a> )
Background:	Integrator complex subunit 6 is a component of the Integrator complex, a complex involved in

## Target Details

the small nuclear RNAs (snRNA) U1 and U2 transcription and in their 3'-box-dependent processing. The Integrator complex is associated with the C-terminal domain (CTD) of RNA polymerase II largest subunit (POLR2A) and is recruited to the U1 and U2 snRNAs genes. May have a tumor suppressor role, an ectopic expression suppressing tumor cell growth.

Gene ID: 26512

UniProt: [Q9UL03](#)

## Application Details

Application Notes: Western blot: 1:1000-2000

Restrictions: For Research Use only

## Handling

Buffer: In 1X PBS, pH 7.4, with 0.09 % sodium azide

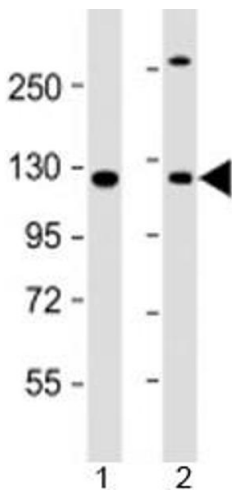
Preservative: Sodium azide

Precaution of Use: This product contains Sodium azide: a POISONOUS AND HAZARDOUS SUBSTANCE which should be handled by trained staff only.

Storage: -20 °C

Storage Comment: Aliquot the INTS6 antibody and store frozen at -20°C or colder. Avoid repeated freeze-thaw cycles.

## Images



### Western Blotting

**Image 1.** Western blot testing of human 1) A431 and 2) HeLa cell lysate with INTS6 antibody at 1:2000. Predicted molecular weight: 100 kDa.