

Datasheet for ABIN5647115
anti-Emerin antibody (AA 1-48)[Go to Product page](#)

2 Images

Overview

Quantity:	100 µg
Target:	Emerin (EMD)
Binding Specificity:	AA 1-48
Reactivity:	Human, Mouse, Rat
Host:	Rabbit
Clonality:	Polyclonal
Application:	Western Blotting (WB), Immunohistochemistry (Paraffin-embedded Sections) (IHC (p))

Product Details

Immunogen:	Amino acids 1-48 (MDNYADLSDELTTLLRRYNIPHGPVVGSTRRLYEKKIFEYETQRRRL-human) were used as the immunogen for the Emerin antibody.
Isotype:	IgG
Purification:	Antigen affinity purified

Target Details

Target:	Emerin (EMD)
Alternative Name:	Emerin (EMD Products)
Background:	Emerin is a serine-rich nuclear membrane protein that in humans is encoded by the EMD gene. And this gene is mapped to Xq28. Emerin is a member of the nuclear lamina-associated protein family. It mediates membrane anchorage to the cytoskeleton. Emery-Dreifuss muscular dystrophy is an X-linked inherited degenerative myopathy resulting from mutation in the EMD

Target Details

(also known clinically as STA) gene. Emerin appears to be involved in mechanotransduction, as emerin-deficient mouse fibroblasts failed to transduce normal mechanosensitive gene expression responses to strain stimuli. In cardiac muscle, emerin is also found complexed to beta-catenin at adherens junctions of intercalated discs, and cardiomyocytes from hearts lacking emerin showed beta-catenin redistribution as well as perturbed intercalated disc architecture and myocyte shape. This interaction appears to be regulated by glycogen synthase kinase 3 beta.

UniProt: [P50402](#)

Application Details

Application Notes: Optimal dilution of the Emerin antibody should be determined by the researcher.\. Western blot: 0.5-1 µg/mL, Immunohistochemistry (FFPE): 1-2 µg/mL

Restrictions: For Research Use only

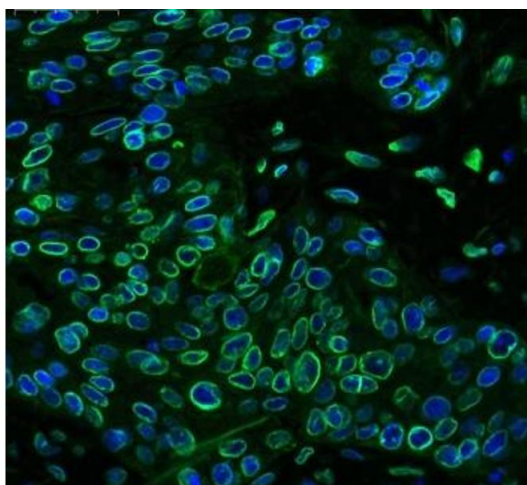
Handling

Buffer: 0.5 mg/mL if reconstituted with 0.2 mL sterile DI water

Storage: -20 °C

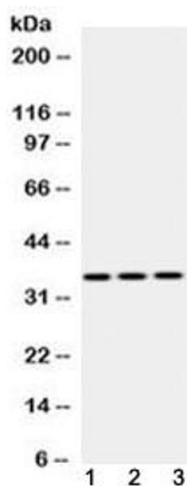
Storage Comment: After reconstitution, the Emerin antibody can be stored for up to one month at 4°C. For long-term, aliquot and store at -20°C. Avoid repeated freezing and thawing.

Images



Immunohistochemistry

Image 1. IHC testing of FFPE human lung cancer tissue with Emerin antibody at 1ug/ml. HIER: steam section in pH6 citrate buffer for 20 min.



Western Blotting

Image 2. Western blot testing of 1) rat skeletal muscle, 2) mouse heart and 3) human HeLa lysate with Emerin antibody at 0.5ug/ml. Predicted molecular weight 29 kDa but routinely observed at ~34 kDa.