



[Go to Product page](#)

Datasheet for ABIN564716
anti-HPSE antibody (AA 72-170)

2 Images

Overview

Quantity:	100 µg
Target:	HPSE
Binding Specificity:	AA 72-170
Reactivity:	Human
Host:	Mouse
Clonality:	Monoclonal
Conjugate:	This HPSE antibody is un-conjugated
Application:	Western Blotting (WB), ELISA

Product Details

Purpose:	Mouse monoclonal antibody raised against a partial recombinant HPSE.
Immunogen:	HPSE (NP_006656.1, 72 a.a. ~ 170 a.a) partial recombinant protein with GST tag. MW of the GST tag alone is 26 KDa.
Sequence:	LILLGSPKLR TLARGLSPAY LRFGGTKTDF LIFDPKKEST FEERSYWQSQ VNQDICKYGS IPPDVEEKLR LEWPYQEQLL LREHYQKKFK NSTYSRSSV
Clone:	4D7
Isotype:	IgG2b
Cross-Reactivity:	Human
Characteristics:	Antibody Reactive Against Recombinant Protein.

Target Details

Target:	HPSE
Alternative Name:	HPSE (HPSE Products)
Background:	Full Gene Name: heparanase Synonyms: HPA,HPR1,HPSE1,HSE1
Gene ID:	10855
NCBI Accession:	NM_006665
Pathways:	Glycosaminoglycan Metabolic Process

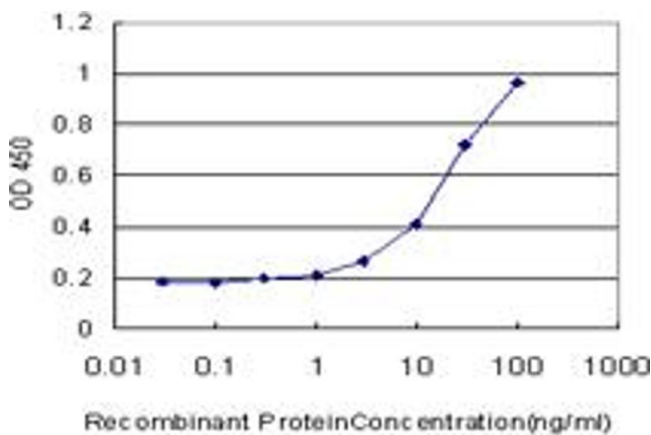
Application Details

Application Notes:	Optimal working dilution should be determined by the investigator.
Restrictions:	For Research Use only

Handling

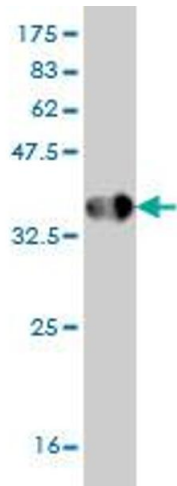
Buffer:	In 1x PBS, pH 7.4
Handling Advice:	Aliquot to avoid repeated freezing and thawing.
Storage:	-20 °C
Storage Comment:	Store at -20°C or lower. Aliquot to avoid repeated freezing and thawing.

Images



ELISA

Image 1. Detection limit for recombinant GST tagged HPSE is approximately 0.3ng/ml as a capture antibody.



Western Blotting

Image 2. Western Blot detection against Immunogen (36.63 kDa).