

Datasheet for ABIN5647180  
**anti-KIT Ligand antibody**[Go to Product page](#)

## 4 Images

## Overview

Quantity:	100 µg
Target:	KIT Ligand (KITLG)
Reactivity:	Human, Mouse, Rat
Host:	Rabbit
Clonality:	Polyclonal
Conjugate:	This KIT Ligand antibody is un-conjugated
Application:	Western Blotting (WB), Immunohistochemistry (Paraffin-embedded Sections) (IHC (p)), ELISA (Capture)

## Product Details

Immunogen:	A recombinant human protein corresponding to amino acids E26-A190 was used as the immunogen for the SCF antibody.
Isotype:	IgG
Purification:	Antigen affinity purified

## Target Details

Target:	KIT Ligand (KITLG)
Alternative Name:	SCF / KITLG ( <a href="#">KITLG Products</a> )
Background:	Stem Cell Factor (also known as SCF, kit-ligand, KL, or steel factor) is a cytokine that binds to the c-Kit receptor (CD117). The SCF gene is mapped to 12q21.32. SCF can exist both as a transmembrane protein and a soluble protein. This cytokine plays an important role in

## Target Details

hematopoiesis (formation of blood cells), spermatogenesis, and melanogenesis. SCF may be used along with other cytokines to culture HSCs and hematopoietic progenitors. The expansion of these cells ex-vivo (outside the body) would allow advances in bone-marrow transplantation, in which HSCs are transferred to a patient to re-establish blood formation. One of the problems of injecting SCF for therapeutic purposes is that SCF activates mast cells. The injection of SCF has been shown to cause allergic-like symptoms and the proliferation of mast cells and melanocytes.

UniProt: [P21583](#)

Pathways: [RTK Signaling](#), [Fc-epsilon Receptor Signaling Pathway](#), [EGFR Signaling Pathway](#), [Neurotrophin Signaling Pathway](#)

## Application Details

Application Notes: Optimal dilution of the SCF antibody should be determined by the researcher.\. Western Blot: 0.5-1 µg/mL,IHC (FFPE): 1-2 µg/mL,ELISA (Capture, human recombinant protein): 0.1-0.5 µg/mL (BSA-free format available)

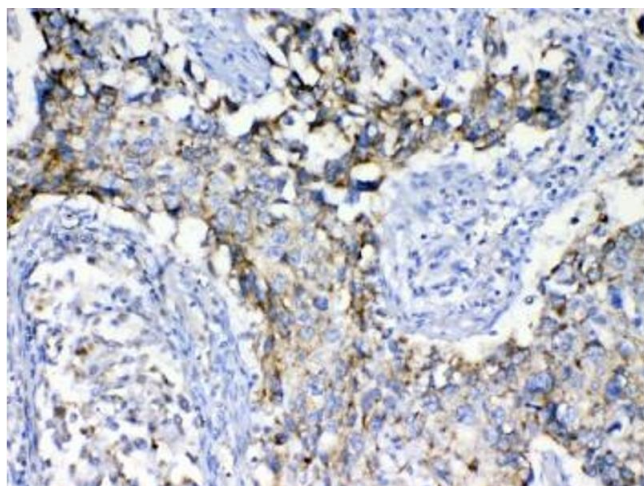
Restrictions: For Research Use only

## Handling

Buffer: 0.5 mg/mL if reconstituted with 0.2 mL sterile DI water

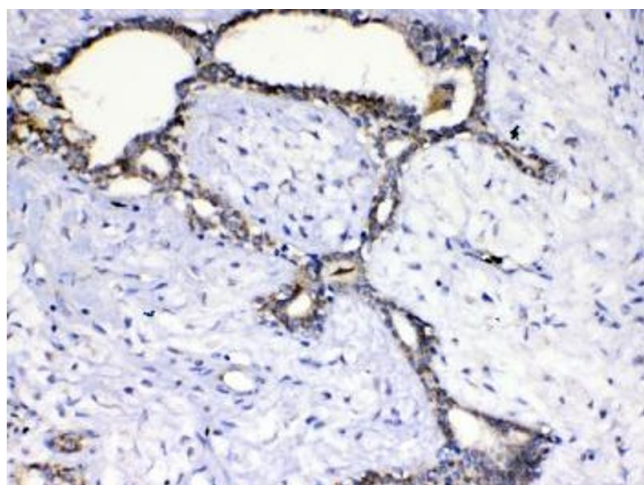
Storage: -20 °C

Storage Comment: After reconstitution, the SCF antibody can be stored for up to one month at 4°C. For long-term, aliquot and store at -20°C. Avoid repeated freezing and thawing.



#### Immunohistochemistry

**Image 1.** IHC testing of FFPE human lung cancer tissue with SCF antibody at 1ug/ml. Required HIER: steam section in pH6 citrate buffer for 20 min and allow to cool prior to testing.



#### Immunohistochemistry

**Image 2.** IHC testing of FFPE human breast cancer tissue with SCF antibody at 1ug/ml. Required HIER: steam section in pH6 citrate buffer for 20 min and allow to cool prior to testing.

kDa  
180-  
130-  
95-  
72-  
55-  
43-  
34-  
26-  
  
17-

#### Western Blotting

**Image 3.** Western blot testing of mouse HEPA1-6 cell lysate with SCF antibody at 0.5ug/ml. Expected molecular weight ~31 kDa (unmodified), 37-42 kDa (glycosylated).

Please check the [product details page](#) for more images. Overall 4 images are available for ABIN5647180.