



[Go to Product page](#)

Datasheet for ABIN564721
anti-USP20 antibody (AA 252-349)

1 Image

Overview

| | |
|----------------------|--------------------------------------|
| Quantity: | 100 µg |
| Target: | USP20 |
| Binding Specificity: | AA 252-349 |
| Reactivity: | Human |
| Host: | Mouse |
| Clonality: | Monoclonal |
| Conjugate: | This USP20 antibody is un-conjugated |
| Application: | ELISA, Western Blotting (WB) |

Product Details

| | |
|-------------------|---|
| Purpose: | Mouse monoclonal antibody raised against a partial recombinant USP20. |
| Immunogen: | USP20 (NP_001008563, 252 a.a. ~ 349 a.a) partial recombinant protein with GST tag. MW of the GST tag alone is 26 KDa. |
| Sequence: | VATVALTEAR DSDSSDTDEK REGDRSPSED EFLSCDSSSD RGE G DGQGRG GGSSQAETEL LIPDEAGRAI SEKERMKDRK FSWGQRTNS EQVDEDAD |
| Clone: | 1A6 |
| Isotype: | IgG1 |
| Cross-Reactivity: | Human |
| Characteristics: | Antibody Reactive Against Recombinant Protein. |

Target Details

| | |
|-------------------|---|
| Target: | USP20 |
| Alternative Name: | USP20 (USP20 Products) |
| Background: | Full Gene Name: ubiquitin specific peptidase 20 Synonyms: KIAA1003,LSFR3A,VDU2 |
| Gene ID: | 10868 |
| NCBI Accession: | NM_001008563 |
| Pathways: | Regulation of G-Protein Coupled Receptor Protein Signaling |

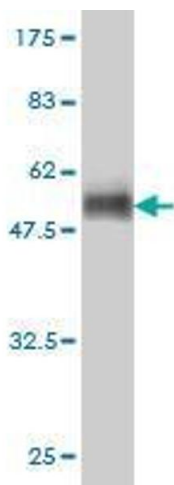
Application Details

| | |
|--------------------|--|
| Application Notes: | Optimal working dilution should be determined by the investigator. |
| Restrictions: | For Research Use only |

Handling

| | |
|------------------|--|
| Buffer: | In 1x PBS, pH 7.4 |
| Handling Advice: | Aliquot to avoid repeated freezing and thawing. |
| Storage: | -20 °C |
| Storage Comment: | Store at -20°C or lower. Aliquot to avoid repeated freezing and thawing. |

Images



Western Blotting

Image 1. Western Blot detection against Immunogen (36.52 KDa) .