

Datasheet for ABIN5647224
anti-PACSIN2 antibody (AA 342-371)

3 Images

[Go to Product page](#)

Overview

Quantity:	0.08 mL
Target:	PACSIN2
Binding Specificity:	AA 342-371
Reactivity:	Human, Mouse
Host:	Rabbit
Clonality:	Polyclonal
Conjugate:	This PACSIN2 antibody is un-conjugated
Application:	Western Blotting (WB), Immunofluorescence (IF), Immunohistochemistry (Paraffin-embedded Sections) (IHC (p))

Product Details

Immunogen:	A portion of amino acids 342-371 from the human protein was used as the immunogen for the PACSIN2 antibody.
Isotype:	Ig Fraction
Purification:	Antigen affinity purified

Target Details

Target:	PACSIN2
Alternative Name:	PACSIN2 (PACSIN2 Products)
Background:	Protein kinase C and casein kinase substrate in neurons protein 2 is a lipid-binding protein that is able to promote the tubulation of the phosphatidic acid-containing membranes it

Target Details

preferentially binds. Plays a role in intracellular vesicle-mediated transport. Involved in the endocytosis of cell-surface receptors like the EGF receptor, contributing to its internalization in the absence of EGF stimulus. May also play a role in the formation of caveolae at the cell membrane. Recruits DNM2 to caveolae, and thereby plays a role in caveola-mediated endocytosis.

UniProt: [Q9UNF0](#)

Application Details

Application Notes: Western blot: 1:500-1:1000,IHC (FFPE): 1:50-100,Immunofluorescence: 1:100

Restrictions: For Research Use only

Handling

Buffer: In 1X PBS, pH 7.4, with 0.09 % sodium azide

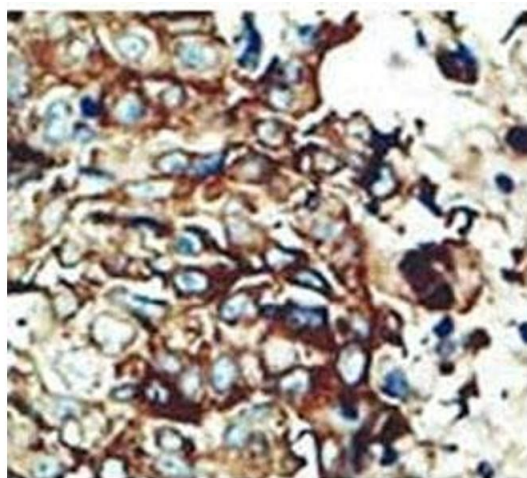
Preservative: Sodium azide

Precaution of Use: This product contains Sodium azide: a POISONOUS AND HAZARDOUS SUBSTANCE which should be handled by trained staff only.

Storage: -20 °C

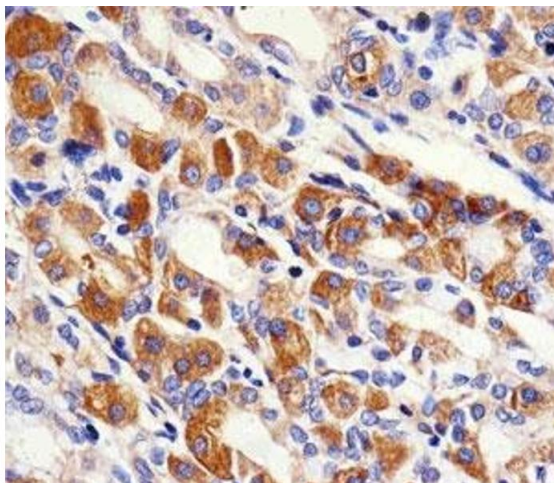
Storage Comment: Aliquot the PACSIN2 antibody and store frozen at -20°C or colder. Avoid repeated freeze-thaw cycles.

Images



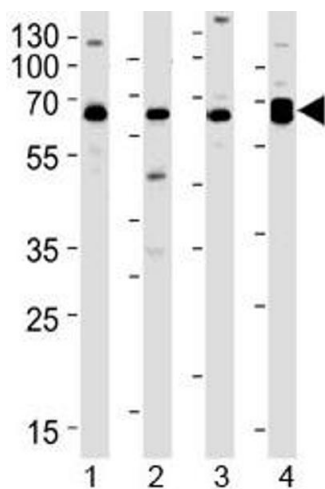
Immunohistochemistry

Image 1. IHC testing of FFPE human breast cancer with PACSIN2 antibody at 1:50. HIER: steamed with pH6 citrate buffer.



Immunohistochemistry

Image 2. IHC testing of FFPE human stomach with PACSIN2 antibody at 1:100. HIER: steamed with pH6 citrate buffer.



Western Blotting

Image 3. Western blot testing of 1) human Daudi, 2) human HL-60, 3) mouse brain and 4) mouse heart lysate with PACSIN2 antibody at 1:1000. Predicted molecular weight: 56 kDa.