

Datasheet for ABIN5647230

**anti-PON1 antibody****3** Images[Go to Product page](#)

## Overview

|              |   |
|--------------|---|
| Quantity:    | 100 µg  |
| Target:      | PON1  |
| Reactivity:  | Mouse, Rat  |
| Host:        | Rabbit  |
| Clonality:   | Polyclonal  |
| Conjugate:   | This PON1 antibody is un-conjugated   |
| Application: | Western Blotting (WB), Immunohistochemistry (Paraffin-embedded Sections) (IHC (p)), ELISA (Capture) |

## Product Details

|               |  |
|---------------|--|
| Immunogen:    | A recombinant mouse protein corresponding to amino acids A30-D274 was used as the immunogen for the PON1 antibody. |
| Isotype:      | IgG  |
| Purification: | Antigen affinity purified  |

## Target Details

|                   |   |
|-------------------|---|
| Target:           | PON1  |
| Alternative Name: | PON1 ( <a href="#">PON1 Products</a> )  |
| Background:       | Serum paraoxonase/arylesterase 1 (PON1), also known as aromatic esterase 1, is an enzyme that in humans is encoded by the PON1 gene. It is mapped to 7q21.3. This gene has esterase and more specifically paraoxonase activity. PON1 is responsible for hydrolysing |

Target Details

organophosphate pesticides and nerve gasses. Polymorphisms in the PON1 gene significantly affect the catalytic ability of the enzyme. PON1 (paraoxonase 1) is also a major anti-atherosclerotic component of high-density lipoprotein (HDL). The PON1 gene is activated by PPAR- $\gamma$ , which increases synthesis and release of paraoxonase 1 enzyme from the liver, reducing atherosclerosis.

UniProt: [P52430](#)

Application Details

Application Notes: Optimal dilution of the PON1 antibody should be determined by the researcher.\. Western Blot: 0.5-1  $\mu$ g/mL,IHC (FFPE): 1-2  $\mu$ g/mL,ELISA (Capture, mouse recombinant protein): 0.1-0.5  $\mu$ g/mL (BSA-free format available)

Restrictions: For Research Use only

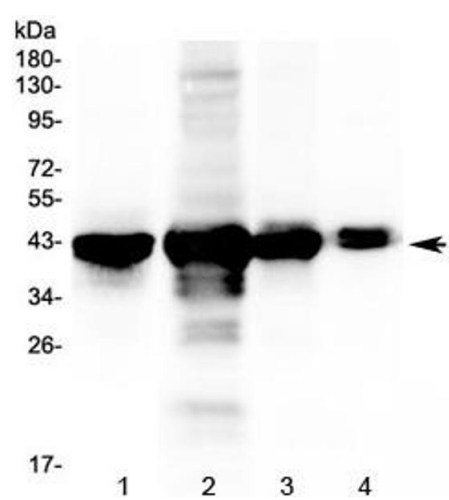
Handling

Buffer: 0.5 mg/mL if reconstituted with 0.2 mL sterile DI water

Storage: -20  $^{\circ}$ C

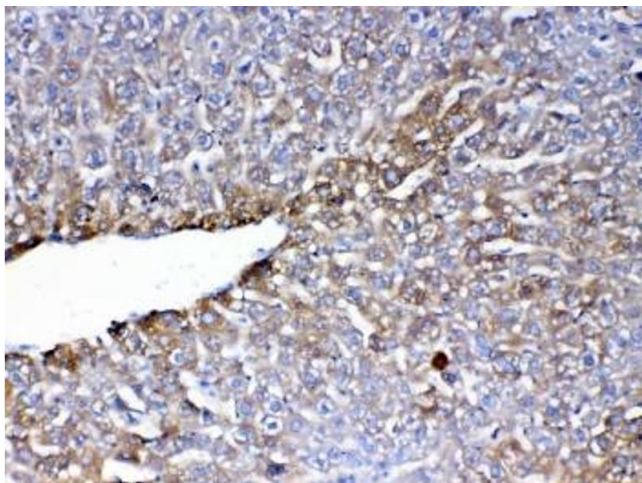
Storage Comment: After reconstitution, the PON1 antibody can be stored for up to one month at 4 $^{\circ}$ C. For long-term, aliquot and store at -20 $^{\circ}$ C. Avoid repeated freezing and thawing.

Images



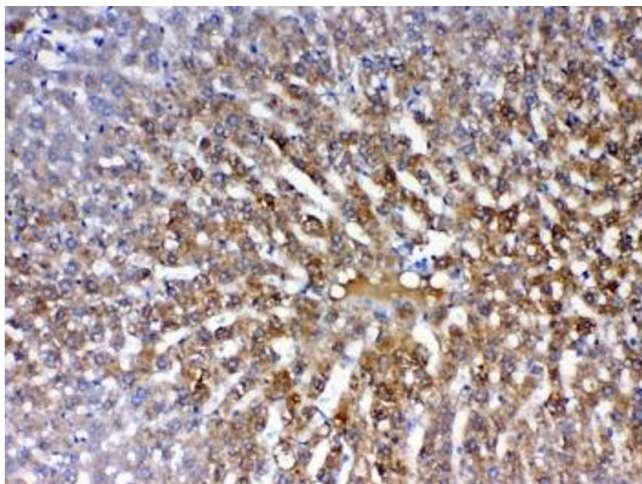
Western Blotting

**Image 1.** Western blot testing of 1) rat liver, 2) mouse liver, 3) mouse lung and 4) mouse testis tissue lysate with PON1 antibody at 0.5ug/ml. Predicted molecular weight: ~40 kDa.



#### Immunohistochemistry

**Image 2.** IHC testing of FFPE mouse liver tissue with PON1 antibody at 1ug/ml. Required HIER: steam section in pH6 citrate buffer for 20 min and allow to cool prior to testing.



#### Immunohistochemistry

**Image 3.** IHC testing of FFPE rat liver tissue with PON1 antibody at 1ug/ml. Required HIER: steam section in pH6 citrate buffer for 20 min and allow to cool prior to testing.