

Datasheet for ABIN5647273

**anti-SYT1 antibody**

## 7 Images

[Go to Product page](#)

## Overview

Quantity:	100 µg
Target:	SYT1
Reactivity:	Human, Rat, Mouse
Host:	Rabbit
Clonality:	Polyclonal
Application:	Western Blotting (WB), Immunohistochemistry (Paraffin-embedded Sections) (IHC (p)), Flow Cytometry (FACS)

## Product Details

Immunogen:	Amino acids RRPIAQWHTLQVEEEVDAMLAVKK were used as the immunogen for the SYT1 antibody.
Isotype:	IgG
Purification:	Antigen affinity purified

## Target Details

Target:	SYT1
Alternative Name:	Synaptotagmin 1 / SYT1 ( <a href="#">SYT1 Products</a> )
Background:	Synaptotagmin-1 is a protein that in humans is encoded by the SYT1 gene. The synaptotagmins are integral membrane proteins of synaptic vesicles thought to serve as Ca(2+) sensors in the process of vesicular trafficking and exocytosis. Calcium binding to synaptotagmin-1 participates in triggering neurotransmitter release at the synapse.

## Target Details

UniProt: [P21579](#)

Pathways: [Synaptic Vesicle Exocytosis, Dicarboxylic Acid Transport](#)

## Application Details

Application Notes: Optimal dilution of the SYT1 antibody should be determined by the researcher.\. Western Blot: 0.5-1 µg/mL,IHC (FFPE): 1-2 µg/mL,FACS: 1-3 µg/10<sup>6</sup> cells

Restrictions: For Research Use only

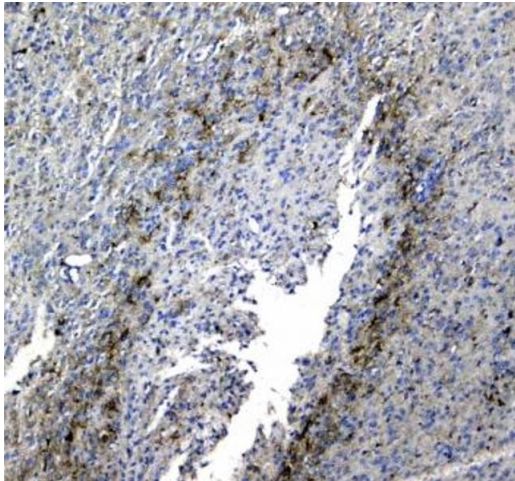
## Handling

Buffer: 0.5 mg/mL if reconstituted with 0.2 mL sterile DI water

Storage: -20 °C

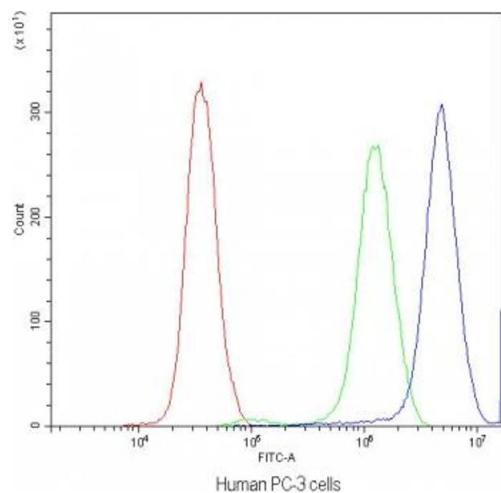
Storage Comment: After reconstitution, the SYT1 antibody can be stored for up to one month at 4°C. For long-term, aliquot and store at -20°C. Avoid repeated freezing and thawing.

## Images



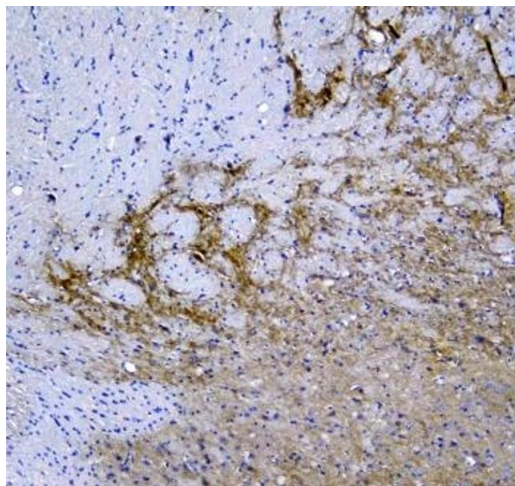
### Immunohistochemistry

**Image 1.** IHC testing of FFPE rat brain tissue with SYT1 antibody at 1ug/ml. Required HIER: steam section in pH6 citrate buffer for 20 min and allow to cool prior to staining.



### Flow Cytometry

**Image 2.** Flow cytometry testing of human PC-3 cells with SYT1 antibody at 1ug/10<sup>6</sup> cells (blocked with goat sera)



### Immunohistochemistry

**Image 3.** IHC testing of FFPE human melanoma with SYT1 antibody at 1ug/ml. Required HIER: steam section in pH6 citrate buffer for 20 min and allow to cool prior to staining.

Please check the [product details page](#) for more images. Overall 7 images are available for ABIN5647273.