

Datasheet for ABIN5647318
anti-ABCD1 antibody (AA 257-285)[Go to Product page](#)

2 Images

Overview

Quantity:	0.08 mL
Target:	ABCD1
Binding Specificity:	AA 257-285
Reactivity:	Human
Host:	Rabbit
Clonality:	Polyclonal
Application:	Western Blotting (WB), ELISA, Immunohistochemistry (IHC), Flow Cytometry (FACS)

Product Details

Immunogen:	A portion of amino acids 257-285 from the human protein was used as the immunogen for this ABCD1 antibody.
Isotype:	Ig Fraction
Cross-Reactivity (Details):	Expected species reactivity: Mouse
Purification:	Antigen affinity purified

Target Details

Target:	ABCD1
Alternative Name:	ABCD1 (ABCD1 Products)
Background:	ABCD1 is a member of the superfamily of ATP-binding cassette (ABC) transporters. ABC proteins transport various molecules across extra- and intra-cellular membranes. ABC genes are divided into seven distinct subfamilies (ABC1, MDR/TAP, MRP, ALD, OABP, GCN20, White).

Target Details

This protein is a member of the ALD subfamily, which is involved in peroxisomal import of fatty acids and/or fatty acyl-CoAs in the organelle. All known peroxisomal ABC transporters are half transporters which require a partner half transporter molecule to form a functional homodimeric or heterodimeric transporter. This peroxisomal membrane protein is likely involved in the peroxisomal transport or catabolism of very long chain fatty acids. Defects in this gene have been identified as the underlying cause of adrenoleukodystrophy, an X-chromosome recessively inherited demyelinating disorder of the nervous system.

UniProt: [P33897](#)

Pathways: [Monocarboxylic Acid Catabolic Process](#)

Application Details

Application Notes: Western blot: 1:1000,IHC (Paraffin): 1:50-1:100,Flow Cytometry: 1:10-1:50

Restrictions: For Research Use only

Handling

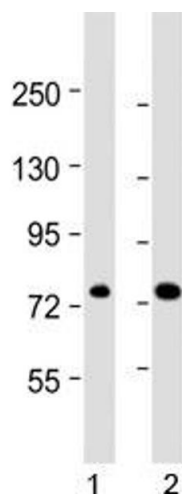
Buffer: In 1X PBS, pH 7.4, with 0.09 % sodium azide

Preservative: Sodium azide

Precaution of Use: This product contains Sodium azide: a POISONOUS AND HAZARDOUS SUBSTANCE which should be handled by trained staff only.

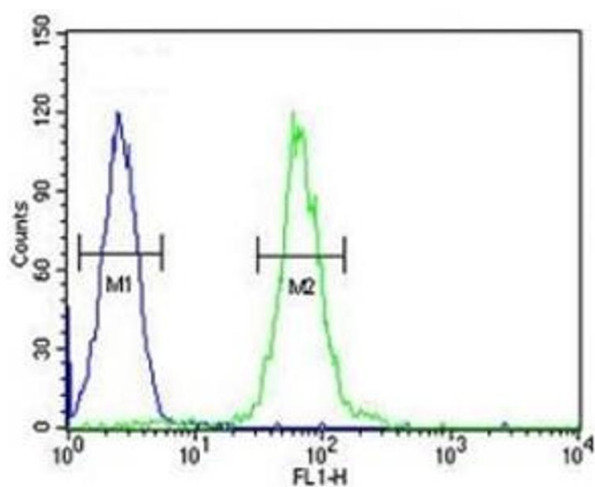
Storage: -20 °C

Storage Comment: Aliquot the ABCD1 antibody and store frozen at -20°C or colder. Avoid repeated freeze-thaw cycles.



Western Blotting

Image 1. ABCD1 antibody western blot analysis in human 1) 293/T17 and 2) HL-60 lysate. Predicted molecular weight ~83 kDa.



Flow Cytometry

Image 2. ABCD1 antibody flow cytometric analysis of HL-60 cells (right histogram) compared to a [negative control](#) (left histogram). FITC-conjugated goat-anti-rabbit secondary Ab was used for the analysis.