

Datasheet for ABIN5647328
anti-ARHGEF1 antibody (AA 41-71)[Go to Product page](#)

2 Images

Overview

Quantity:	100 µg
Target:	ARHGEF1
Binding Specificity:	AA 41-71
Reactivity:	Human, Mouse, Rat
Host:	Rabbit
Clonality:	Polyclonal
Application:	Western Blotting (WB), Immunohistochemistry (Paraffin-embedded Sections) (IHC (p))

Product Details

Immunogen:	Amino acids 41-71 (EQNSQFQSLEQVKRRPAHLMALLQHVALQFE) from the human protein were used as the immunogen for the ARHGEF1 antibody.
Isotype:	IgG
Purification:	Antigen affinity purified

Target Details

Target:	ARHGEF1
Alternative Name:	ARHGEF1 (ARHGEF1 Products)
Background:	Rho guanine nucleotide exchange factor 1, also called p115-RhoGEF, is a protein that in humans is encoded by the ARHGEF1 gene. Rho GTPases play a fundamental role in numerous cellular processes that are initiated by extracellular stimuli that work through G protein coupled receptors. The encoded protein may form a complex with G proteins and stimulate Rho-

Target Details

dependent signals. Multiple alternatively spliced transcript variants have been found for this gene, but the full-length nature of some variants has not been defined.

UniProt:	Q92888
Pathways:	Neurotrophin Signaling Pathway , Regulation of G-Protein Coupled Receptor Protein Signaling , Thromboxane A2 Receptor Signaling

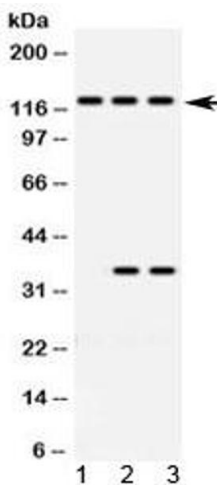
Application Details

Application Notes:	Western blot: 0.5-1 µg/mL,IHC (FFPE): 1-2 µg/mL
Restrictions:	For Research Use only

Handling

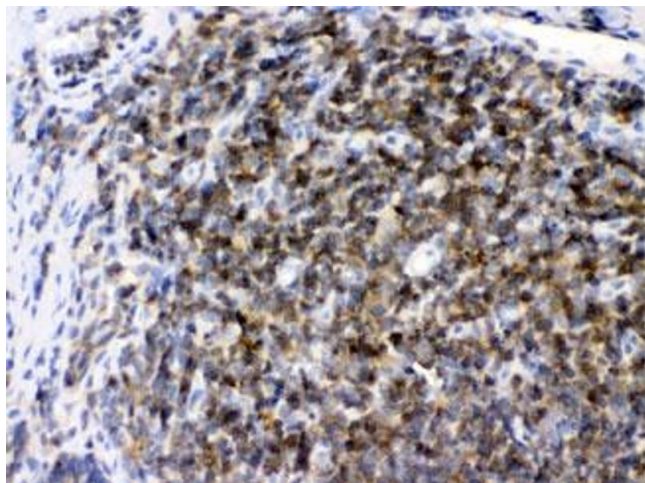
Buffer:	0.5 mg/mL if reconstituted with 0.2 mL sterile DI water
Storage:	-20 °C
Storage Comment:	After reconstitution, the ARHGEF1 antibody can be stored for up to one month at 4°C. For long-term, aliquot and store at -20°C. Avoid repeated freezing and thawing.

Images



Western Blotting

Image 1. Western blot testing of 1) rat brain, 2) human HeLa and 3) human Jurkat lysate with ARHGEF1 antibody at 0.5ug/ml. Predicted molecular weight ~102 kDa, but routinely observed at ~115 kDa.



Immunohistochemistry

Image 2. IHC testing of FFPE rat lymph tissue with ARHGEF1 antibody at 1ug/ml. HIER: steam sections in pH6 citrate buffer for 20 min.