



[Go to Product page](#)

Datasheet for ABIN564733
anti-SUGT1 antibody (AA 151-260)

1 Image

Overview

Quantity:	50 µL
Target:	SUGT1
Binding Specificity:	AA 151-260
Reactivity:	Human
Host:	Mouse
Clonality:	Polyclonal
Conjugate:	This SUGT1 antibody is un-conjugated
Application:	Western Blotting (WB), ELISA

Product Details

Purpose:	Mouse polyclonal antibody raised against a partial recombinant SUGT1.
Immunogen:	SUGT1 (NP_006695, 151 a.a. ~ 260 a.a) partial recombinant protein with GST tag.
Sequence:	VVITLMIKNV QKNDVNVFEFS EKELSALVKL PSGEDYNLKL ELLHPIPEQ STFKVLSTKI EIKLKKPEAV RWEKLEGQGD VPTPKQFVAD VKNLYPSSSP YTRNWDKLVG
Cross-Reactivity:	Human
Characteristics:	Antibody Reactive Against Recombinant Protein.

Target Details

Target:	SUGT1
Alternative Name:	SUGT1 (SUGT1 Products)

Target Details

Background:	Full Gene Name: SGT1, suppressor of G2 allele of SKP1 (<i>S. cerevisiae</i>) Synonyms: SGT1
Gene ID:	10910
NCBI Accession:	NM_006704

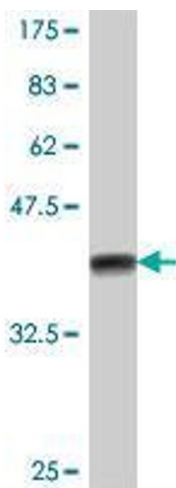
Application Details

Application Notes:	Optimal working dilution should be determined by the investigator.
Restrictions:	For Research Use only

Handling

Format:	Liquid
Buffer:	50 % glycerol
Handling Advice:	Aliquot to avoid repeated freezing and thawing.
Storage:	-20 °C
Storage Comment:	Store at -20°C or lower. Aliquot to avoid repeated freezing and thawing.

Images



Western Blotting

Image 1. Western Blot detection against Immunogen (38.21 kDa).