

Datasheet for ABIN5647367
anti-GNB1 antibody (AA 2-42)

3 Images

[Go to Product page](#)

Overview

Quantity:	100 µg
Target:	GNB1
Binding Specificity:	AA 2-42
Reactivity:	Human, Mouse, Rat
Host:	Rabbit
Clonality:	Polyclonal
Application:	Western Blotting (WB), Immunohistochemistry (Paraffin-embedded Sections) (IHC (p))

Product Details

Immunogen:	Amino acids 2-42 (SELDQLRQAEQLKNQIRDARKACADATLSQITNNIDPVGR) from the human protein were used as the immunogen for the GNB1 antibody.
Isotype:	IgG
Purification:	Antigen affinity purified

Target Details

Target:	GNB1
Alternative Name:	GNB1 (GNB1 Products)
Background:	Guanine nucleotide-binding protein G(I)/G(S)/G(T) subunit beta-1 is a protein that in humans is encoded by the GNB1 gene. Heterotrimeric guanine nucleotide-binding proteins (G proteins), which integrate signals between receptors and effector proteins, are composed of an alpha, a beta, and a gamma subunit. These subunits are encoded by families of related genes. This

Target Details

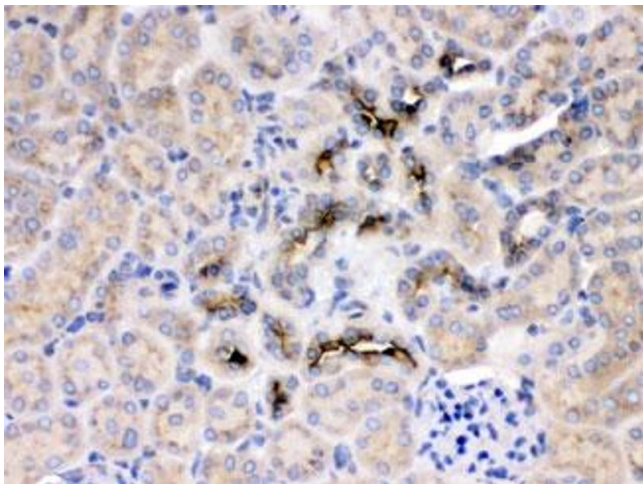
gene encodes a beta subunit. Beta subunits are important regulators of alpha subunits, as well as of certain signal transduction receptors and effectors. This gene uses alternative polyadenylation signals.

UniProt:	P62873
Pathways:	Myometrial Relaxation and Contraction , Regulation of G-Protein Coupled Receptor Protein Signaling , CXCR4-mediated Signaling Events , Phototransduction , Thromboxane A2 Receptor Signaling , SARS-CoV-2 Protein Interactome

Application Details

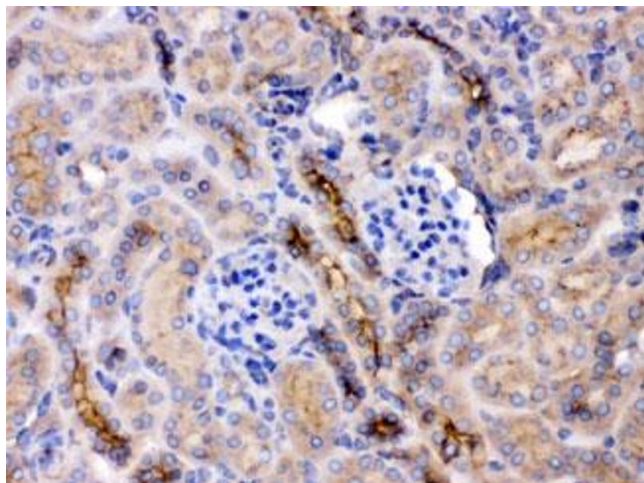
Application Notes:	Western blot: 0.5-1 µg/mL,IHC (FFPE): 1-2 µg/mL
Restrictions:	For Research Use only
Handling	
Buffer:	0.5 mg/mL if reconstituted with 0.2 mL sterile DI water
Storage:	-20 °C
Storage Comment:	After reconstitution, the GNB1 antibody can be stored for up to one month at 4°C. For long-term, aliquot and store at -20°C. Avoid repeated freezing and thawing.

Images



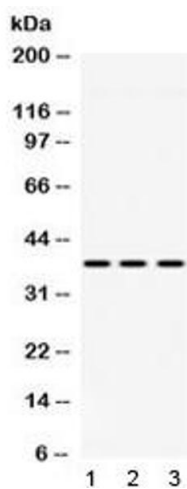
Immunohistochemistry

Image 1. IHC testing of FFPE rat kidney with GNB1 antibody at 1ug/ml. HIER: steam section in pH6 citrate buffer for 20 min.



Immunohistochemistry

Image 2. IHC testing of FFPE mouse kidney with GNB1 antibody at 1ug/ml. HIER: steam section in pH6 citrate buffer for 20 min.



Western Blotting

Image 3. Western blot testing of 1) rat liver, 2) mouse heart and 3) human HeLa lysate with GNB1 antibody at 0.5ug/ml. Predicted/observed molecular weight: ~37 kDa.