

Datasheet for ABIN5647437
anti-ABCA2 antibody (AA 1339-1373)



[Go to Product page](#)

1 Image

Overview

Quantity:	0.08 mL
Target:	ABCA2
Binding Specificity:	AA 1339-1373
Reactivity:	Human
Host:	Rabbit
Clonality:	Polyclonal
Conjugate:	This ABCA2 antibody is un-conjugated
Application:	ELISA, Western Blotting (WB)

Product Details

Immunogen:	This ABCA2 antibody was produced from a rabbit immunized with a KLH conjugated synthetic peptide between 1339-1373 amino acids from the central region of human ABCA2.
Isotype:	Ig Fraction
Purification:	Antigen affinity purified

Target Details

Target:	ABCA2
Alternative Name:	ABCA2 (ABCA2 Products)
Background:	ATP-binding cassette sub-family A member 2 is a probable transporter, its natural substrate has not been found yet. May have a role in macrophage lipid metabolism and neural development.

Target Details

UniProt: [Q9BZC7](#)

Application Details

Application Notes: Western blot: 1:1000

Restrictions: For Research Use only

Handling

Buffer: In 1X PBS, pH 7.4, with 0.09 % sodium azide

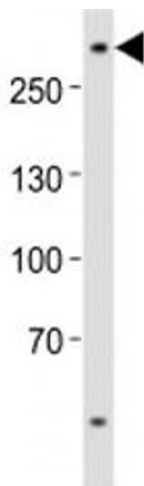
Preservative: Sodium azide

Precaution of Use: This product contains Sodium azide: a POISONOUS AND HAZARDOUS SUBSTANCE which should be handled by trained staff only.

Storage: -20 °C

Storage Comment: Aliquot the ABCA2 antibody and store frozen at -20°C or colder. Avoid repeated freeze-thaw cycles.

Images



Western Blotting

Image 1. Western blot analysis of lysate from U-87 MG cell line using ABCA2 antibody at 1:1000. Predicted molecular weight ~270 kDa.