



[Go to Product page](#)

Datasheet for ABIN5647444  
**anti-ABCF1 antibody (AA 687-716)**

2 Images

### Overview

Quantity:	0.08 mL
Target:	ABCF1
Binding Specificity:	AA 687-716
Reactivity:	Human, Mouse
Host:	Rabbit
Clonality:	Polyclonal
Application:	Western Blotting (WB), ELISA, Immunohistochemistry (IHC)

### Product Details

Immunogen:	A portion of amino acids 687-716 from the human protein was used as the immunogen for this ABCF1 antibody.
Isotype:	Ig Fraction
Cross-Reactivity (Details):	Expected species reactivity: Pig
Purification:	Antigen affinity purified

### Target Details

Target:	ABCF1
Alternative Name:	ABCF1 ( <a href="#">ABCF1 Products</a> )
Background:	The protein is a member of the superfamily of ATP-binding cassette (ABC) transporters. ABC proteins transport various molecules across extra- and intra-cellular membranes. ABC proteins are divided into seven distinct subfamilies (ABC1, MDR/TAP, MRP, ALD, OABP, GCN20, White).

## Target Details

This protein is a member of the GCN20 subfamily. Unlike other members of the superfamily, this protein lacks the transmembrane domains which are characteristic of most ABC transporters. This protein may be regulated by tumor necrosis factor-alpha and play a role in enhancement of protein synthesis and the inflammation process.

UniProt: [Q8NE71](#)

## Application Details

Application Notes: Western blot: 1:1000,IHC (Paraffin): 1:50-1:100

Restrictions: For Research Use only

## Handling

Buffer: In 1X PBS, pH 7.4, with 0.09 % sodium azide

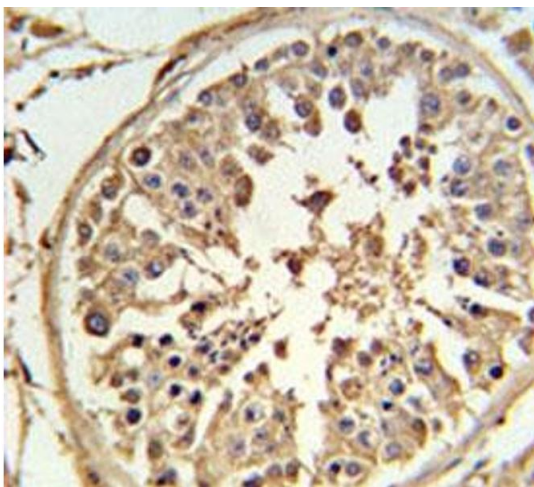
Preservative: Sodium azide

Precaution of Use: This product contains Sodium azide: a POISONOUS AND HAZARDOUS SUBSTANCE which should be handled by trained staff only.

Storage: -20 °C

Storage Comment: Aliquot the ABCF1 antibody and store frozen at -20°C or colder. Avoid repeated freeze-thaw cycles.

## Images



### Immunohistochemistry

**Image 1.** ABCF1 antibody IHC analysis in formalin fixed and paraffin embedded human testis tissue.



### Western Blotting

**Image 2.** Western blot analysis of ABCF1 antibody and NCI-H460 lysate. Predicted molecular weight ~96 kDa.