

Datasheet for ABIN5647445
anti-ABCF2 antibody (AA 3-32)



[Go to Product page](#)

1 Image

Overview

Quantity:	0.08 mL
Target:	ABCF2
Binding Specificity:	AA 3-32
Reactivity:	Human
Host:	Rabbit
Clonality:	Polyclonal
Conjugate:	This ABCF2 antibody is un-conjugated
Application:	Western Blotting (WB), ELISA

Product Details

Immunogen:	A portion of amino acids 3-32 from the human protein was used as the immunogen for this ABCF2 antibody.
Isotype:	Ig Fraction
Cross-Reactivity (Details):	Expected species reactivity: Mouse,Bovine
Purification:	Antigen affinity purified

Target Details

Target:	ABCF2
Alternative Name:	ABCF2 (ABCF2 Products)
Background:	The protein encoded by this gene is a member of the superfamily of ATP-binding cassette

Target Details

(ABC) transporters. ABC proteins transport various molecules across extra- and intracellular membranes. ABC genes are divided into seven distinct subfamilies (ABC1, MDR/TAP, MRP, ALD, OABP, GCN20, and White). This protein is a member of the GCN20 subfamily. Alternative splicing of this gene results in multiple transcript variants. [provided by RefSeq].

UniProt: [Q9UG63](#)

Application Details

Application Notes: Western blot: 1:1000

Restrictions: For Research Use only

Handling

Buffer: In 1X PBS, pH 7.4, with 0.09 % sodium azide

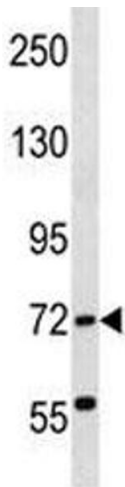
Preservative: Sodium azide

Precaution of Use: This product contains Sodium azide: a POISONOUS AND HAZARDOUS SUBSTANCE which should be handled by trained staff only.

Storage: -20 °C

Storage Comment: Aliquot the ABCF2 antibody and store frozen at -20°C or colder. Avoid repeated freeze-thaw cycles.

Images



Western Blotting

Image 1. ABCF2 antibody western blot analysis in human K562 lysate. Predicted molecular weight ~71 kDa.