

Datasheet for ABIN5647478
anti-ABI1 antibody (AA 81-108)

3 Images

[Go to Product page](#)

Overview

Quantity:	0.08 mL
Target:	ABI1
Binding Specificity:	AA 81-108
Reactivity:	Human
Host:	Rabbit
Clonality:	Polyclonal
Conjugate:	This ABI1 antibody is un-conjugated
Application:	Western Blotting (WB), ELISA, Immunohistochemistry (IHC), Immunofluorescence (IF), Flow Cytometry (FACS)

Product Details

Immunogen:	A portion of amino acids 81-108 from the human protein was used as the immunogen for this ABI1 antibody.
Isotype:	Ig Fraction
Cross-Reactivity (Details):	Expected species reactivity: Mouse,Rat
Purification:	Antigen affinity purified

Target Details

Target:	ABI1
Alternative Name:	ABI1 / SSH3BP1 (ABI1 Products)

Target Details

Background:	Abelson interactor 1 has been found to form a complex with EPS8 and SOS1, and is thought to be involved in the transduction of signals from Ras to Rac. In addition, this protein may play a role in the regulation of EGF-induced Erk pathway activation as well as cytoskeletal reorganization and EGFR signaling.
UniProt:	Q8IZP0
Pathways:	RTK Signaling , Response to Water Deprivation , ER-Nucleus Signaling

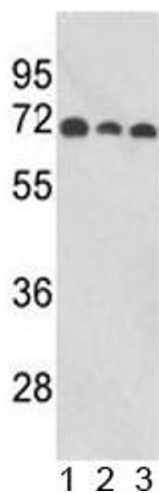
Application Details

Application Notes:	Western blot: 1:1000,IHC (Paraffin): 1:50-1:100,Flow Cytometry: 1:10-1:50,Immunofluorescence: 1:10-1:50
Restrictions:	For Research Use only

Handling

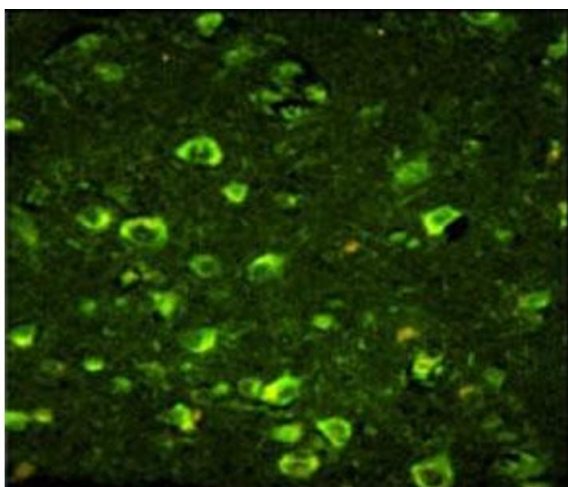
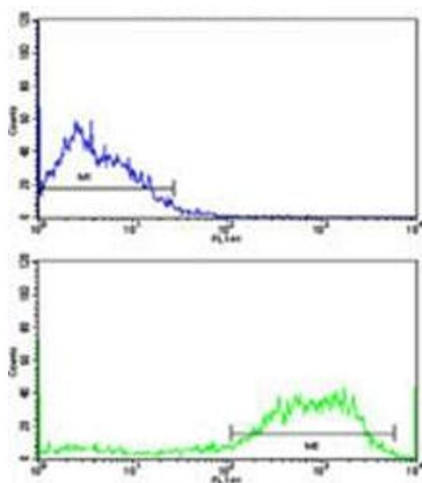
Buffer:	In 1X PBS, pH 7.4, with 0.09 % sodium azide
Preservative:	Sodium azide
Precaution of Use:	This product contains Sodium azide: a POISONOUS AND HAZARDOUS SUBSTANCE which should be handled by trained staff only.
Storage:	-20 °C
Storage Comment:	Aliquot the ABI1 antibody and store frozen at -20°C or colder. Avoid repeated freeze-thaw cycles.

Images



Western Blotting

Image 1. Western blot analysis of ABI1 antibody and human 1) MCF-7, 2) CEM, and 3) Jurkat lysate. Predicted molecular weight ~55 kDa.



Flow Cytometry

Image 2. Flow cytometric analysis of SK-Br-3 cells using ABI1 antibody (bottom histogram) compared to a [negative control](#) (top histogram). FITC-conjugated goat-anti-rabbit secondary Ab was used for the analysis.

Immunofluorescence

Image 3. Immunofluorescence analysis of ABI1 antibody with paraffin-embedded human brain tissue. Primary antibody was followed by FITC-conjugated goat anti-rabbit IgG (green).