

Datasheet for ABIN5647528
anti-CYP2D6 antibody (AA 315-347)[Go to Product page](#)

4 Images

Overview

Quantity:	100 µg
Target:	CYP2D6
Binding Specificity:	AA 315-347
Reactivity:	Human, Mouse, Rat
Host:	Rabbit
Clonality:	Polyclonal
Application:	Western Blotting (WB), Immunohistochemistry (Paraffin-embedded Sections) (IHC (p))

Product Details

Immunogen:	Amino acids 315-347 (AWGLLLMILHPDVQRRVQQEIDDVIGQVRRPEM) from the human protein were used as the immunogen for the CYP2D6 antibody.
Isotype:	IgG
Purification:	Antigen affinity purified

Target Details

Target:	CYP2D6
Alternative Name:	CYP2D6 (CYP2D6 Products)
Background:	Cytochrome P450 2D6 (CYP2D6) is one of the most important enzymes involved in the metabolism of xenobiotics in the body. It is a member of Cytochrome P450, family 2, subfamily D, polypeptide 6. This gene is mapped to chromosome 22q13.1. It has got 497 amino acid proteins which shares 73 % sequence identity with the rat protein. CYP2D6 is highly expressed

Target Details

in human liver and it is the major isozyme involved in the formation of N-hydroxyprocainamide, a metabolite potentially involved in the drug-induced lupus syndrome observed with procainamide.

UniProt: [P10635](#)

Application Details

Application Notes: Optimal dilution of the CYP2D6 antibody should be determined by the researcher.\. WB: 0.5-1 μ g/mL,IHC (FFPE): 1-2 μ g/mL

Restrictions: For Research Use only

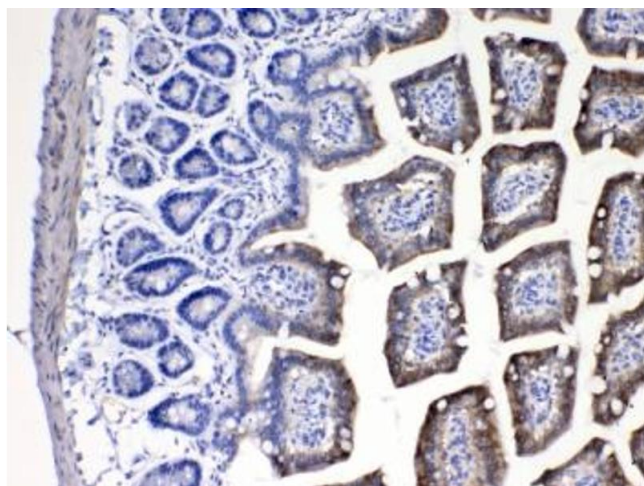
Handling

Buffer: 0.5 mg/mL if reconstituted with 0.2 mL sterile DI water

Storage: -20 °C

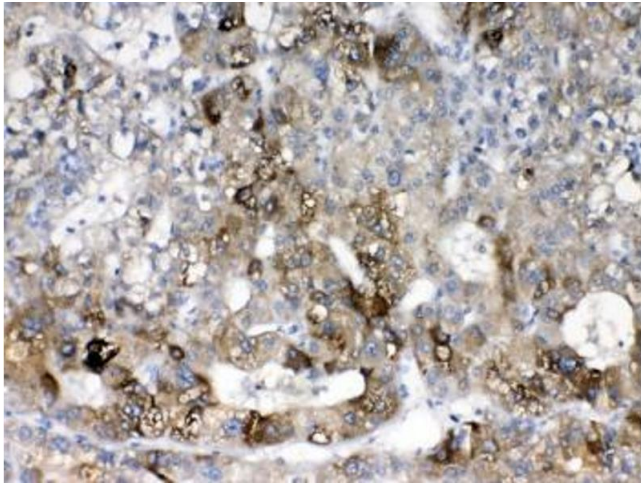
Storage Comment: After reconstitution, the CYP2D6 antibody can be stored for up to one month at 4°C. For long-term, aliquot and store at -20°C. Avoid repeated freezing and thawing.

Images



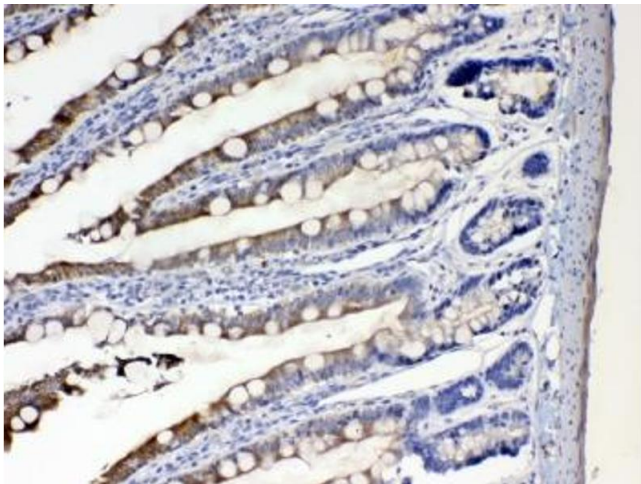
Immunohistochemistry

Image 1. IHC testing of FFPE mouse intestine tissue with CYP2D6 antibody at 1ug/ml. Required HIER: steam section in pH6 citrate buffer for 20 min and allow to cool prior to testing.



Immunohistochemistry

Image 2. IHC testing of FFPE human liver cancer tissue with CYP2D6 antibody at 1ug/ml. Required HIER: steam section in pH6 citrate buffer for 20 min and allow to cool prior to testing.



Immunohistochemistry

Image 3. IHC testing of FFPE rat intestine tissue with CYP2D6 antibody at 1ug/ml. Required HIER: steam section in pH6 citrate buffer for 20 min and allow to cool prior to testing.

Please check the [product details page](#) for more images. Overall 4 images are available for ABIN5647528.