



[Go to Product page](#)

Datasheet for ABIN5647581

## anti-IGFBP1 antibody

### 4 Images

#### Overview

Quantity:	100 µg
Target:	IGFBP1
Reactivity:	Mouse, Rat
Host:	Rabbit
Clonality:	Polyclonal
Conjugate:	This IGFBP1 antibody is un-conjugated
Application:	Western Blotting (WB), Immunohistochemistry (Paraffin-embedded Sections) (IHC (p)), ELISA (Capture)

#### Product Details

Immunogen:	A recombinant mouse protein corresponding to amino acids A26-N272 was used as the immunogen for the IGFBP1 antibody.
Isotype:	IgG
Purification:	Antigen affinity purified

#### Target Details

Target:	IGFBP1
Alternative Name:	IGFBP1 ( <a href="#">IGFBP1 Products</a> )
Background:	IGFBP1, Insulin-like growth factor-binding protein 1, also known as placental protein 12 (PP12), is a protein that in humans is encoded by the IGFBP1 gene. The gene has 4 exons and spans 5.9 kb. And the IGFBP1 gene is localized to 7p13-p12 by in situ hybridization. This gene is a

## Target Details

member of the Insulin-like growth factor-binding protein (IGFBP) family and encodes a protein with an IGFBP domain and a type-I thyroglobulin domain. The protein binds both insulin-like growth factors (IGFs) I and II and circulates in the plasma. Binding of this protein prolongs the half-life of the IGFs and alters their interaction with cell surface receptors. Alternate transcriptional splice variants, encoding different isoforms, have been characterized.

UniProt: [P47876](#)

Pathways: [Myometrial Relaxation and Contraction](#), [ER-Nucleus Signaling](#), [Growth Factor Binding](#)

## Application Details

Application Notes: Optimal dilution of the IGFBP1 antibody should be determined by the researcher.\. Western Blot: 0.5-1 µg/mL,IHC (FFPE): 1-2 µg/mL,ELISA (Capture, recombinant mouse protein): 0.1-0.5 µg/mL (BSA-free format available)

Restrictions: For Research Use only

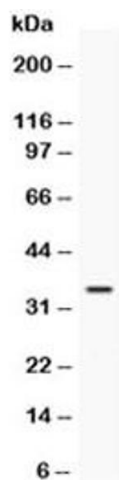
## Handling

Buffer: 0.5 mg/mL if reconstituted with 0.2 mL sterile DI water

Storage: -20 °C

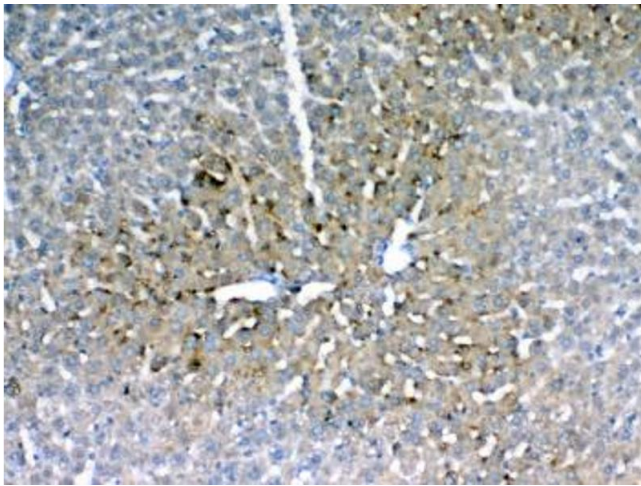
Storage Comment: After reconstitution, the IGFBP1 antibody can be stored for up to one month at 4°C. For long-term, aliquot and store at -20°C. Avoid repeated freezing and thawing.

## Images



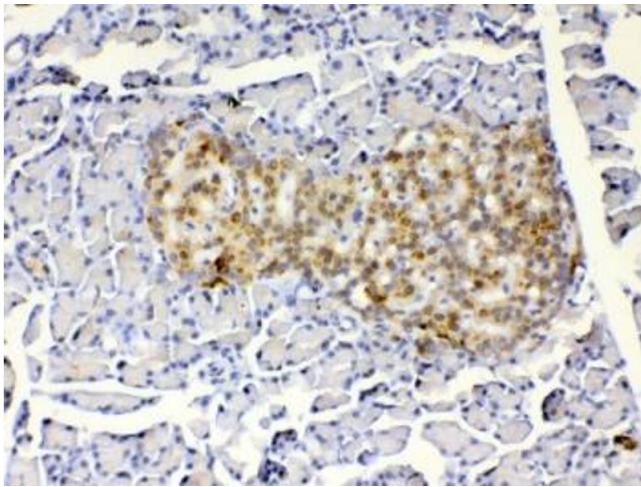
### Western Blotting

**Image 1.** Western blot testing of recombinant mouse protein with IGFBP1 antibody at 0.5ug/ml. Expected molecular weight: 28-35 kDa.



#### Immunohistochemistry

**Image 2.** IHC testing of FFPE rat liver tissue with IGF1BP1 antibody at 1ug/ml. Required HIER: steam section in pH6 citrate buffer for 20 min and allow to cool prior to testing.



#### Immunohistochemistry

**Image 3.** IHC testing of FFPE rat pancreas tissue with IGF1BP1 antibody at 1ug/ml. Required HIER: steam section in pH6 citrate buffer for 20 min and allow to cool prior to testing.

Please check the [product details page](#) for more images. Overall 4 images are available for ABIN5647581.