



[Go to Product page](#)

Datasheet for ABIN564760
anti-CLP1 antibody (AA 316-425)

3 Images

Overview

Quantity:	100 µg
Target:	CLP1
Binding Specificity:	AA 316-425
Reactivity:	Human
Host:	Mouse
Clonality:	Monoclonal
Conjugate:	This CLP1 antibody is un-conjugated
Application:	Western Blotting (WB), ELISA

Product Details

Purpose:	Mouse monoclonal antibody raised against a partial recombinant HEAB.
Immunogen:	HEAB (NP_006822, 316 a.a. ~ 425 a.a) partial recombinant protein with GST tag. MW of the GST tag alone is 26 KDa.
Sequence:	AFNVKFSQDK IYKVGAPTIP DSCLPLGMSQ EDNQLKLVVP TPGRDMVHHL LSVSTAEGTE ENLSETSVAG FIVVTSVDLE HQVFTVLSPA PRPLPKNFLL IMDIRFMDLK
Clone:	8D5
Isotype:	IgG2a
Cross-Reactivity:	Human
Characteristics:	Antibody Reactive Against Recombinant Protein.

Target Details

Target:	CLP1
Alternative Name:	CLP1 (CLP1 Products)
Background:	Full Gene Name: CLP1, cleavage and polyadenylation factor I subunit, homolog (<i>S. cerevisiae</i>) Synonyms: HEAB,hClp1
Gene ID:	10978
NCBI Accession:	NM_006831
Pathways:	Ribonucleoprotein Complex Subunit Organization

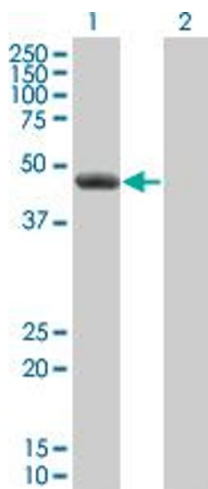
Application Details

Application Notes:	Optimal working dilution should be determined by the investigator.
Restrictions:	For Research Use only

Handling

Buffer:	In 1x PBS, pH 7.4
Handling Advice:	Aliquot to avoid repeated freezing and thawing.
Storage:	-20 °C
Storage Comment:	Store at -20°C or lower. Aliquot to avoid repeated freezing and thawing.

Images

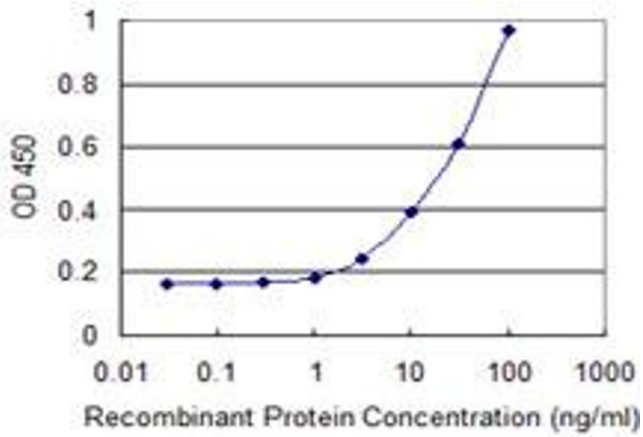


Western Blotting

Image 1. Western Blot analysis of HEAB expression in transfected 293T cell line by HEAB monoclonal antibody (M01), clone 8D5.

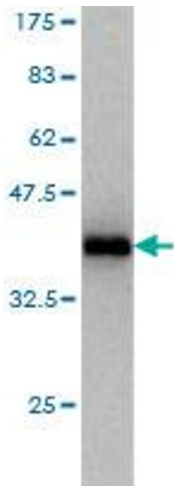
Lane 1: HEAB transfected lysate(47.946 kDa).

Lane 2: Non-transfected lysate.



ELISA

Image 2. Detection limit for recombinant GST tagged CLP1 is 1 ng/ml as a capture antibody.



Western Blotting

Image 3. Western Blot detection against Immunogen (37.84 kDa).