



Datasheet for ABIN564762
anti-RAB32 antibody (AA 136-225)



[Go to Product page](#)

2 Images

Overview

Quantity:	50 µL
Target:	RAB32
Binding Specificity:	AA 136-225
Reactivity:	Human
Host:	Mouse
Clonality:	Polyclonal
Conjugate:	This RAB32 antibody is un-conjugated
Application:	Western Blotting (WB), ELISA

Product Details

Purpose:	Mouse polyclonal antibody raised against a partial recombinant RAB32.
Immunogen:	RAB32 (NP_006825, 136 a.a. ~ 225 a.a) partial recombinant protein with GST tag.
Sequence:	IPAVLLANKC DQNKDSSQSP SQVDQFCKEH GFAGWFETSA KDNINIEEAA RFLVEKILVN HQSFPNEEND VDKIKLDQET LRAENKSQCC
Cross-Reactivity:	Human
Characteristics:	Antibody Reactive Against Recombinant Protein.

Target Details

Target:	RAB32
Alternative Name:	RAB32 (RAB32 Products)

Target Details

Background:	Full Gene Name: RAB32, member RAS oncogene family Synonyms:
Gene ID:	10981
NCBI Accession:	NM_006834

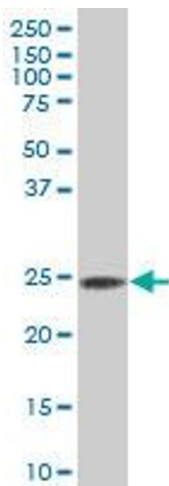
Application Details

Application Notes:	Optimal working dilution should be determined by the investigator.
Restrictions:	For Research Use only

Handling

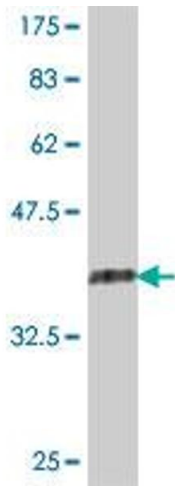
Format:	Liquid
Buffer:	50 % glycerol
Handling Advice:	Aliquot to avoid repeated freezing and thawing.
Storage:	-20 °C
Storage Comment:	Store at -20°C or lower. Aliquot to avoid repeated freezing and thawing.

Images



Western Blotting

Image 1. RAB32 polyclonal antibody (A01), Lot # 060126JC01. Western Blot analysis of RAB32 expression in Daoy.



Western Blotting

Image 2. Western Blot detection against Immunogen (36.01 kDa).