



Datasheet for ABIN564763  
**anti-MAPRE2 antibody (AA 1-62)**



[Go to Product page](#)

5 Images

Overview

Quantity:	100 µg
Target:	MAPRE2
Binding Specificity:	AA 1-62
Reactivity:	Human
Host:	Mouse
Clonality:	Monoclonal
Conjugate:	This MAPRE2 antibody is un-conjugated
Application:	Western Blotting (WB), Immunofluorescence (IF), ELISA, Immunohistochemistry (Paraffin-embedded Sections) (IHC (p))

Product Details

Purpose:	Mouse monoclonal antibody raised against a partial recombinant MAPRE2.
Immunogen:	MAPRE2 (NP_055083, 1 a.a. ~ 62 a.a) partial recombinant protein with GST tag. MW of the GST tag alone is 26 KDa.
Sequence:	MPGPTQTLSP NGENNNDIQ DNNGTIIPFR KHTVRGERSY SWGMAVNVYS TSITQETMSR HD
Clone:	4D7
Isotype:	IgG1
Cross-Reactivity:	Human
Characteristics:	Antibody Reactive Against Recombinant Protein.

## Target Details

Target:	MAPRE2
Alternative Name:	MAPRE2 ( <a href="#">MAPRE2 Products</a> )
Background:	Full Gene Name: microtubule-associated protein, RP/EB family, member 2 Synonyms: EB1,EB2,RP1
Gene ID:	10982
NCBI Accession:	<a href="#">NM_014268</a>

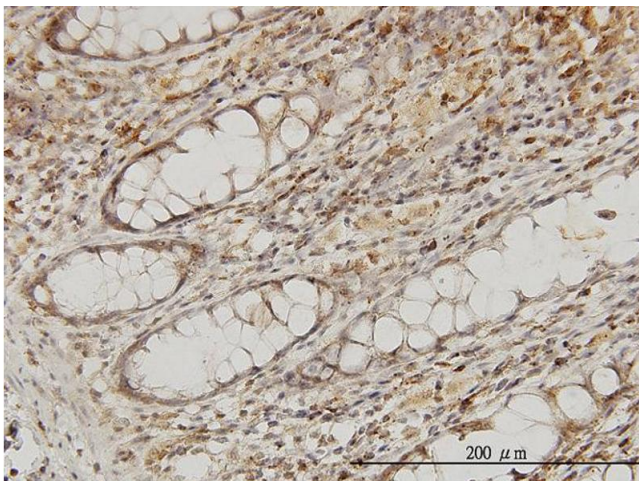
## Application Details

Application Notes:	Optimal working dilution should be determined by the investigator.
Restrictions:	For Research Use only

## Handling

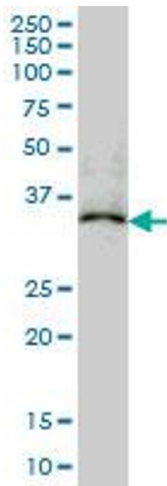
Buffer:	In 1x PBS, pH 7.4
Handling Advice:	Aliquot to avoid repeated freezing and thawing.
Storage:	-20 °C
Storage Comment:	Store at -20°C or lower. Aliquot to avoid repeated freezing and thawing.

## Images



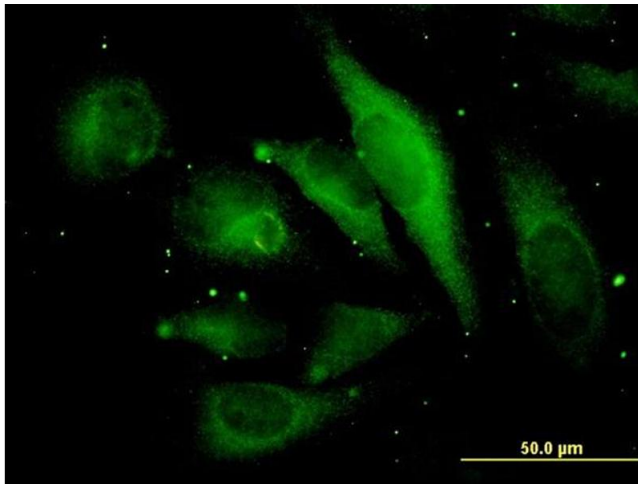
### Immunostaining

**Image 1.** Immunoperoxidase of monoclonal antibody to MAPRE2 on formalin-fixed paraffin-embedded human colon. [antibody concentration 3 ug/ml]



### Western Blotting

**Image 2.** MAPRE2 monoclonal antibody (M03), clone 4D7 Western Blot analysis of MAPRE2 expression in K-562 .



### Immunofluorescence

**Image 3.** Immunofluorescence of monoclonal antibody to MAPRE2 on HeLa cell. [antibody concentration 35 ug/ml]

Please check the [product details page](#) for more images. Overall 5 images are available for ABIN564763.