



[Go to Product page](#)

Datasheet for ABIN5647656  
**anti-LYN antibody (AA 470-501)**

5 Images

Overview

Quantity:	100 µg
Target:	LYN
Binding Specificity:	AA 470-501
Reactivity:	Human, Mouse, Rat
Host:	Rabbit
Clonality:	Polyclonal
Application:	Western Blotting (WB), Immunohistochemistry (Paraffin-embedded Sections) (IHC (p))

Product Details

Immunogen:	Amino acids 470-501 (DELYDIMKMCWKEKAEERPTFDYLQSVLDDFY) were used as the immunogen for the LYN antibody.
Isotype:	IgG
Purification:	Antigen affinity purified

Target Details

Target:	LYN
Alternative Name:	LYN ( <a href="#">LYN Products</a> )
Background:	Tyrosine-protein kinase Lyn is a protein that in humans is encoded in humans by the LYN gene. It is mapped to 8q12.1. Lyn is a member of the Src family of protein tyrosine kinases. In various hematopoietic cells, Lyn has emerged as a key enzyme involved in the regulation of cell activation. Lyn has been described to have an inhibitory role in myeloid lineage proliferation.

## Target Details

UniProt: [P07948](#)

Pathways: [Fc-epsilon Receptor Signaling Pathway](#), [Hormone Transport](#), [Response to Growth Hormone Stimulus](#), [Cellular Response to Molecule of Bacterial Origin](#), [Regulation of Leukocyte Mediated Immunity](#), [Positive Regulation of Immune Effector Process](#), [CXCR4-mediated Signaling Events](#), [Thromboxane A2 Receptor Signaling](#), [Integrin Complex](#), [BCR Signaling](#)

## Application Details

Application Notes: Optimal dilution of the LYN antibody should be determined by the researcher.\. Western Blot: 0.5-1 µg/mL,IHC (FFPE): 1-2 µg/mL

Restrictions: For Research Use only

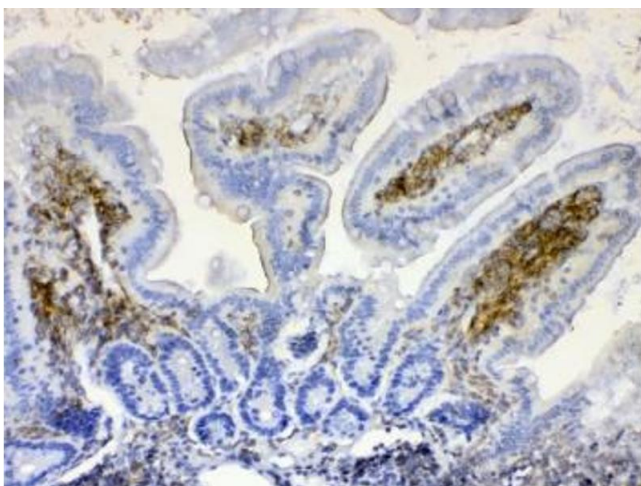
## Handling

Buffer: 0.5 mg/mL if reconstituted with 0.2 mL sterile DI water

Storage: -20 °C

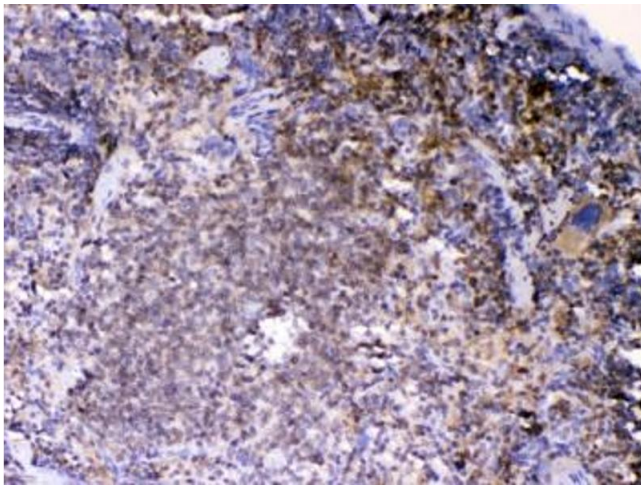
Storage Comment: After reconstitution, the LYN antibody can be stored for up to one month at 4°C. For long-term, aliquot and store at -20°C. Avoid repeated freezing and thawing.

## Images



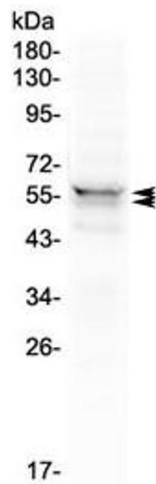
### Immunohistochemistry

**Image 1.** IHC testing of FFPE mouse intestine tissue with LYN antibody at 1ug/ml. Required HIER: steam section in pH6 citrate buffer for 20 min and allow to cool prior to testing.



### Immunohistochemistry

**Image 2.** IHC testing of FFPE mouse spleen tissue with LYN antibody at 1ug/ml. Required HIER: steam section in pH6 citrate buffer for 20 min and allow to cool prior to testing.



### Western Blotting

**Image 3.** Western blot testing of human 293T cell lysate with LYN antibody at 0.5ug/ml. Predicted molecular weight ~53 kDa (p53lyn), ~56 kDa (p56lyn).

Please check the [product details page](#) for more images. Overall 5 images are available for ABIN5647656.