

Datasheet for ABIN5647681
anti-ACAT1 antibody (AA 296-329)



[Go to Product page](#)

2 Images

Overview

Quantity:	0.08 mL
Target:	ACAT1
Binding Specificity:	AA 296-329
Reactivity:	Human, Mouse
Host:	Rabbit
Clonality:	Polyclonal
Conjugate:	This ACAT1 antibody is un-conjugated
Application:	Western Blotting (WB), ELISA, Immunohistochemistry (IHC)

Product Details

Immunogen:	A portion of amino acids 296-329 from the human protein was used as the immunogen for this ACAT1 antibody.
Isotype:	Ig Fraction
Cross-Reactivity (Details):	Expected species reactivity: Primate
Purification:	Purified

Target Details

Target:	ACAT1
Alternative Name:	ACAT1 (ACAT1 Products)
Background:	Acetyl-CoA acetyltransferase 1 is a mitochondrially localized enzyme that catalyzes the

Target Details

reversible formation of acetoacetyl-CoA from two molecules of acetyl-CoA. Defects in the gene encoding ACAT1 are associated with the alpha-methylacetoaceticaciduria disorder,an inborn error of isoleucine catabolism characterized by urinary excretion of 2-methyl-3-hydroxybutyric acid, 2-methylacetoacetic acid, tiglylglycine, and butanone.

UniProt: [P24752](#)

Application Details

Application Notes: Western blot: 1:1000,IHC (Paraffin): 1:10-1:50

Restrictions: For Research Use only

Handling

Buffer: In 1X PBS, pH 7.4, with 0.09 % sodium azide

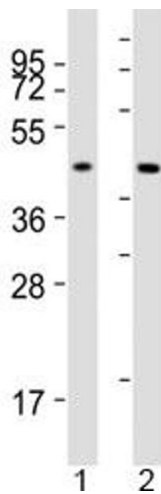
Preservative: Sodium azide

Precaution of Use: This product contains Sodium azide: a POISONOUS AND HAZARDOUS SUBSTANCE which should be handled by trained staff only.

Storage: -20 °C

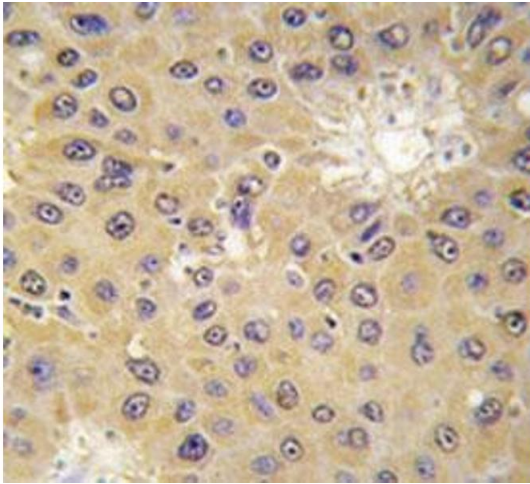
Storage Comment: Aliquot the ACAT1 antibody and store frozen at -20°C or colder. Avoid repeated freeze-thaw cycles.

Images



Western Blotting

Image 1. Western blot testing of ACAT1 antibody at 1:2000 dilution. Lane 1: human SW620 lysate



Immunohistochemistry

Image 2. IHC analysis of FFPE human hepatocarcinoma tissue stained with ACAT1 antibody