

Datasheet for ABIN5647703

**anti-CA2 antibody**

## 4 Images

[Go to Product page](#)

## Overview

Quantity:	100 µg
Target:	CA2
Reactivity:	Human, Rat, Mouse
Host:	Rabbit
Clonality:	Polyclonal
Conjugate:	This CA2 antibody is un-conjugated
Application:	Western Blotting (WB), Immunohistochemistry (Paraffin-embedded Sections) (IHC (p)), Flow Cytometry (FACS)

## Product Details

Immunogen:	Amino acids S2-K260 from the human protein were used as the immunogen for the CA2 antibody.
Isotype:	IgG
Purification:	Antigen affinity purified

## Target Details

Target:	CA2
Alternative Name:	CA2 / Carbonic Anhydrase II ( <a href="#">CA2 Products</a> )
Background:	CA2 is a cytosolic enzyme with the highest activity among all known CAs. The carbonic anhydrases (ACs) form a family of enzymes that catalyze the rapid interconversion of carbon dioxide and water to bicarbonate and protons (or vice versa), a reversible reaction that occurs

## Target Details

relatively slowly in the absence of a catalyst. Mutations in the CA2 gene result in the CA II deficiency syndrome, an autosomal recessive disorder that produces osteopetrosis, renal tubular acidosis and cerebral calcification. This gene is mapped to 8q22.

UniProt: [P00918](#)

## Application Details

Application Notes: Western blot: 0.5-1 µg/mL, IHC (FFPE): 1-2 µg/mL, FACS: 1-3 µg/10<sup>6</sup> cells

Restrictions: For Research Use only

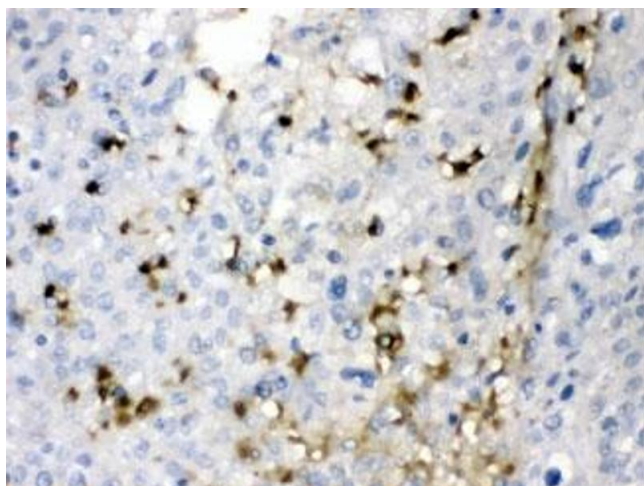
## Handling

Buffer: 0.5 mg/mL if reconstituted with 0.2 mL sterile DI water

Storage: -20 °C

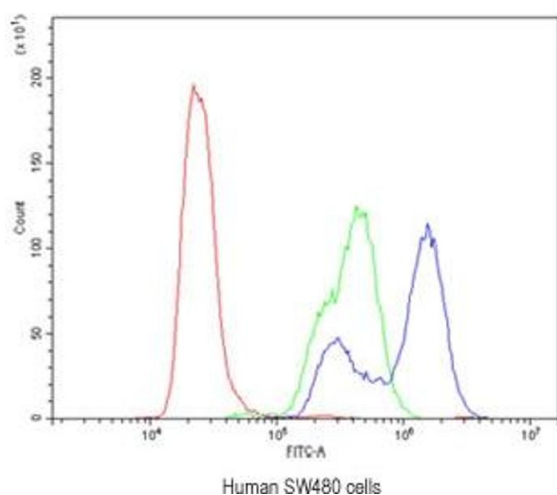
Storage Comment: Prior to reconstitution, store at 4°C. After reconstitution, the CA2 antibody can be stored for up to one month at 4°C. For long-term, aliquot and store at -20°C. Avoid repeated freezing and thawing.

## Images



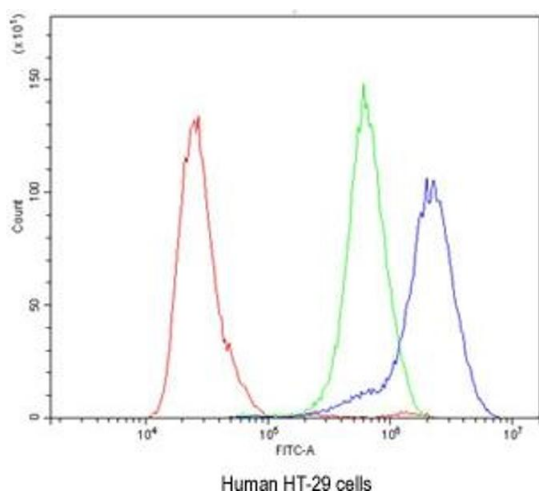
### Immunohistochemistry

**Image 1.** IHC testing of FFPE human liver cancer tissue with CA2 antibody at 1ug/ml. HIER: steam in pH6 citrate buffer and allow to cool prior to staining.



#### Flow Cytometry

**Image 2.** Flow cytometry testing of human SW480 cells with CA2 antibody at 1ug/10<sup>6</sup> cells (blocked with goat sera)



#### Flow Cytometry

**Image 3.** Flow cytometry testing of human HT-29 cells with CA2 antibody at 1ug/10<sup>6</sup> cells (blocked with goat sera)

Please check the [product details page](#) for more images. Overall 4 images are available for ABIN5647703.