

Datasheet for ABIN5647739
anti-ABHD1 antibody (AA 289-315)



[Go to Product page](#)

1 Image

Overview

Quantity:	0.08 mL
Target:	ABHD1
Binding Specificity:	AA 289-315
Reactivity:	Human
Host:	Rabbit
Clonality:	Polyclonal
Conjugate:	This ABHD1 antibody is un-conjugated
Application:	Western Blotting (WB), ELISA

Product Details

Immunogen:	A portion of amino acids 289-315 from the human protein was used as the immunogen for this ABHD1 antibody.
Isotype:	Ig Fraction
Purification:	Antigen affinity purified

Target Details

Target:	ABHD1
Alternative Name:	ABHD1 (ABHD1 Products)
Background:	Abhydrolase domain-containing protein 1 is a member of the AB hydrolase superfamily and encodes a protein with an alpha/beta hydrolase fold. This domain is common to a number of hydrolytic enzymes of widely differing phylogenetic origins and catalytic functions.

Target Details

UniProt: Q96SE0

Application Details

Application Notes: Western blot: 1:1000

Restrictions: For Research Use only

Handling

Buffer: In 1X PBS, pH 7.4, with 0.09 % sodium azide

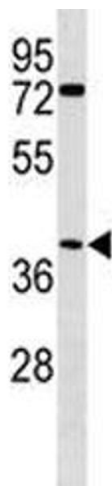
Preservative: Sodium azide

Precaution of Use: This product contains Sodium azide: a POISONOUS AND HAZARDOUS SUBSTANCE which should be handled by trained staff only.

Storage: -20 °C

Storage Comment: Aliquot the ABHD1 antibody and store frozen at -20°C or colder. Avoid repeated freeze-thaw cycles.

Images



Western Blotting

Image 1. ABHD1 antibody western blot analysis in human MDA-MB468 lysate. Predicted molecular weight ~45 kDa.