

Datasheet for ABIN5647743
anti-ABI2 antibody (AA 1-30)[Go to Product page](#)

2 Images

Overview

Quantity:	0.08 mL
Target:	ABI2
Binding Specificity:	AA 1-30
Reactivity:	Human, Mouse
Host:	Rabbit
Clonality:	Polyclonal
Conjugate:	This ABI2 antibody is un-conjugated
Application:	Western Blotting (WB), ELISA, Flow Cytometry (FACS)

Product Details

Immunogen:	A portion of amino acids 1-30 from the human protein was used as the immunogen for this ABI2 antibody.
Isotype:	Ig Fraction
Purification:	Antigen affinity purified

Target Details

Target:	ABI2
Alternative Name:	ABI2 (ABI2 Products)
Background:	ABI2 may act in regulation of cell growth and transformation by interacting with nonreceptor tyrosine kinases ABL1 and/or ABL2. May be involved in cytoskeletal reorganization. Regulates ABL1/c-Abl-mediated phosphorylation of MENA.

Target Details

UniProt: [Q9NYB9](#)

Application Details

Application Notes: Western blot: 1:1000, Flow Cytometry: 1:10-1:50

Restrictions: For Research Use only

Handling

Buffer: In 1X PBS, pH 7.4, with 0.09 % sodium azide

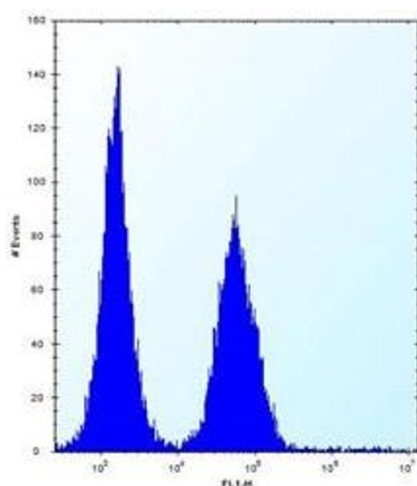
Preservative: Sodium azide

Precaution of Use: This product contains Sodium azide: a POISONOUS AND HAZARDOUS SUBSTANCE which should be handled by trained staff only.

Storage: -20 °C

Storage Comment: Aliquot the ABI2 antibody and store frozen at -20°C or colder. Avoid repeated freeze-thaw cycles.

Images



Flow Cytometry

Image 1. ABI2 antibody flow cytometric analysis (intracellular) of Jurkat cells (right histogram) compared to a [negative control](#) (left histogram). FITC-conjugated donkey-anti-rabbit secondary Ab was used for the analysis.



Western Blotting

Image 2. ABI2 antibody western blot analysis in mouse heart tissue lysate. Predicted molecular weight ~55 kDa.