



[Go to Product page](#)

Datasheet for ABIN5647746

## anti-CD2AP antibody

### 3 Images

#### Overview

Quantity:	100 µg
Target:	CD2AP (Cd2ap)
Reactivity:	Human, Rat, Mouse
Host:	Rabbit
Clonality:	Polyclonal
Conjugate:	This CD2AP antibody is un-conjugated
Application:	Western Blotting (WB), ELISA, Flow Cytometry (FACS)

#### Product Details

Immunogen:	A recombinant human protein corresponding to amino acids K253-K337 was used as the immunogen for the CD2AP antibody.
Isotype:	IgG
Purification:	Antigen affinity purified

#### Target Details

Target:	CD2AP (Cd2ap)
Alternative Name:	CD2AP ( <a href="#">Cd2ap Products</a> )
Background:	CD2-associated protein is a protein that in humans is encoded by the CD2AP gene. This gene encodes a scaffolding molecule that regulates the actin cytoskeleton. The protein directly interacts with filamentous actin and a variety of cell membrane proteins through multiple actin binding sites, SH3 domains, and a proline-rich region containing binding sites for SH3 domains.

## Target Details

The cytoplasmic protein localizes to membrane ruffles, lipid rafts, and the leading edges of cells. It is implicated in dynamic actin remodeling and membrane trafficking that occurs during receptor endocytosis and cytokinesis. Haploinsufficiency of this gene is implicated in susceptibility to glomerular disease.

UniProt: [Q9Y5K6](#)

## Application Details

Application Notes: Optimal dilution of the CD2AP antibody should be determined by the researcher. Western Blot: 0.5-1 µg/mL, FACS: 1-3 µg/10<sup>6</sup> cells, Direct ELISA: 0.1-0.5 µg/mL

Restrictions: For Research Use only

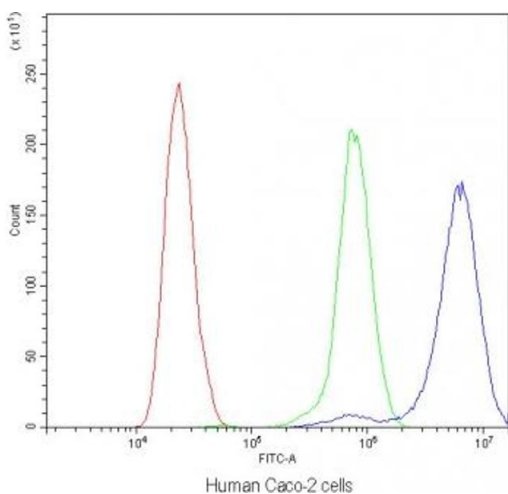
## Handling

Buffer: 0.5 mg/mL if reconstituted with 0.2 mL sterile DI water

Storage: -20 °C

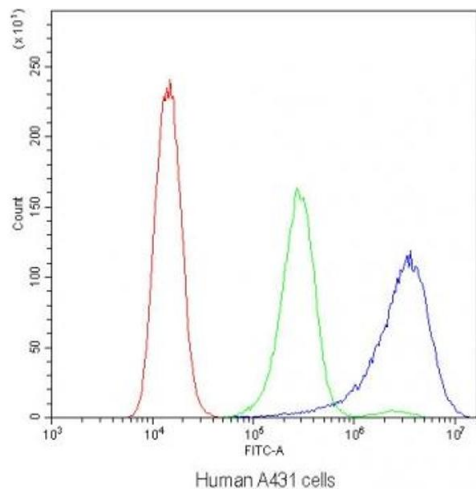
Storage Comment: After reconstitution, the CD2AP antibody can be stored for up to one month at 4°C. For long-term, aliquot and store at -20°C. Avoid repeated freezing and thawing.

## Images



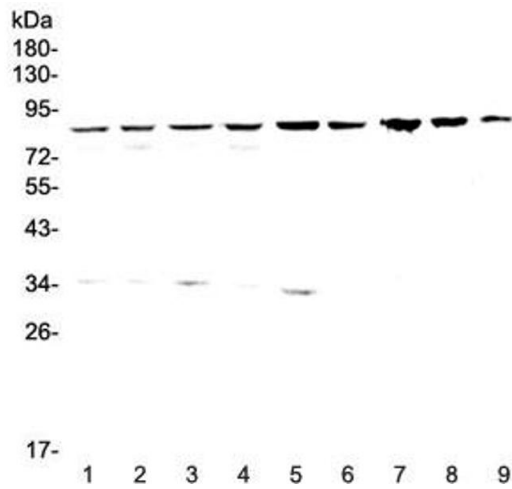
### Flow Cytometry

**Image 1.** Flow cytometry testing of human Caco-2 cells with CD2AP antibody at 1 µg/10<sup>6</sup> cells (blocked with goat sera)



### Flow Cytometry

**Image 2.** Flow cytometry testing of human A431 cells with CD2AP antibody at 1ug/10<sup>6</sup> cells (blocked with goat sera)



### Western Blotting

**Image 3.** Western blot testing of human 1) HeLa, 2) 293T, 3) MCF7, 4) COLO320, 5) 22RV1 6) SK-OV-3, 7) rat stomach, 8) rat liver and 9) mouse liver lysate with CD2AP antibody at 0.5ug/ml. Predicted molecular weight: 71-80 kDa.