



Datasheet for ABIN5647748
anti-TMEM107 antibody (AA 22-57)



[Go to Product page](#)

2 Images

Overview

Quantity:	100 µg
Target:	TMEM107
Binding Specificity:	AA 22-57
Reactivity:	Human
Host:	Rabbit
Clonality:	Polyclonal
Application:	Western Blotting (WB), Immunohistochemistry (Paraffin-embedded Sections) (IHC (p))

Product Details

Immunogen:	Amino acids 22-57 (VITLFWSRDSNIQACLPLTFTPEEYDKQDIQLVAAL) from the human protein were used as the immunogen for the TMEM107 antibody.
Isotype:	IgG
Purification:	Antigen affinity purified

Target Details

Target:	TMEM107
Alternative Name:	TMEM107 (TMEM107 Products)
Background:	Cilia are dynamic signaling organelles essential for developmental patterning, including left-right specification, skeletal formation, neural development, and organogenesis. TMEM107 is predicted to be critical for cilia formation and signaling in a subset of embryonic tissues. Based on an alignment of the TMEM107 sequence with the genomic sequence (GRCh38), the gene

Target Details

was mapped to chromosome 17p13.1.

UniProt: [Q6UX40](#)

Application Details

Application Notes: Optimal dilution of the TMEM107 antibody should be determined by the researcher.\. WB: 0.5-1 µg/mL,IHC (FFPE): 1-2 µg/mL

Restrictions: For Research Use only

Handling

Buffer: 0.5 mg/mL if reconstituted with 0.2 mL sterile DI water

Storage: -20 °C

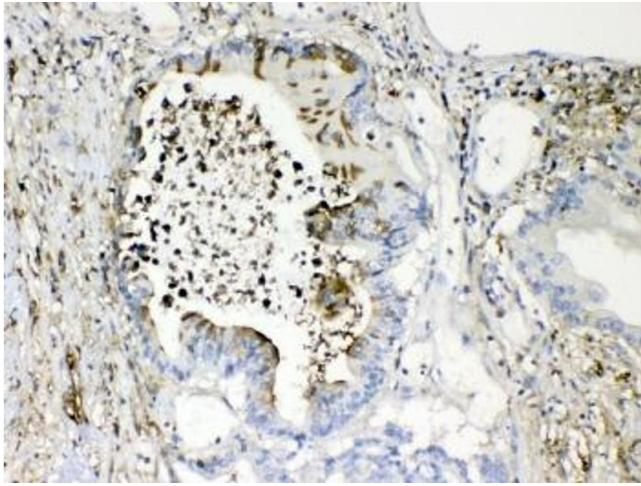
Storage Comment: After reconstitution, the TMEM107 antibody can be stored for up to one month at 4°C. For long-term, aliquot and store at -20°C. Avoid repeated freezing and thawing.

Images



Western Blotting

Image 1. Western blot testing of human MCF7 cell lysate with TMEM107 antibody at 0.5ug/ml. Predicted molecular weight ~16 kDa, routinely observed at ~19 kDa.



Immunohistochemistry

Image 2. IHC testing of FFPE human intestinal cancer tissue with TMEM107 antibody at 1ug/ml. Required HIER: steam section in pH6 citrate buffer for 20 min and allow to cool prior to testing.