



[Go to Product page](#)

Datasheet for ABIN5647867  
**anti-MSI1 antibody (AA 21-54)**

5 Images

### Overview

Quantity:	100 µg
Target:	MSI1
Binding Specificity:	AA 21-54
Reactivity:	Human, Mouse, Rat
Host:	Rabbit
Clonality:	Polyclonal
Application:	Western Blotting (WB), Immunohistochemistry (Paraffin-embedded Sections) (IHC (p))

### Product Details

Immunogen:	Amino acids 21-54 (KMFIGGLSWQTTQEGLREYFGQFGEVKECLVMRD) from the human protein were used as the immunogen for the Musashi antibody.
Isotype:	IgG
Purification:	Antigen affinity purified

### Target Details

Target:	MSI1
Alternative Name:	MSI1 / Musashi 1 ( <a href="#">MSI1 Products</a> )
Background:	RNA-binding protein Musashi homolog 1 is a protein that in humans is encoded by the MSI1 gene. This gene encodes a protein containing two conserved tandem RNA recognition motifs. Similar proteins in other species function as RNA-binding proteins and play central roles in posttranscriptional gene regulation. Expression of this gene has been correlated with the grade

## Target Details

of the malignancy and proliferative activity in gliomas and melanomas. A pseudogene for this gene is located on chromosome 11q13.

UniProt: [O43347](#)

Pathways: [Stem Cell Maintenance](#)

## Application Details

Application Notes: Optimal dilution of the Musashi antibody should be determined by the researcher. \. WB: 0.5-1  $\mu$ g/mL,IHC (FFPE): 1-2  $\mu$ g/mL

Restrictions: For Research Use only

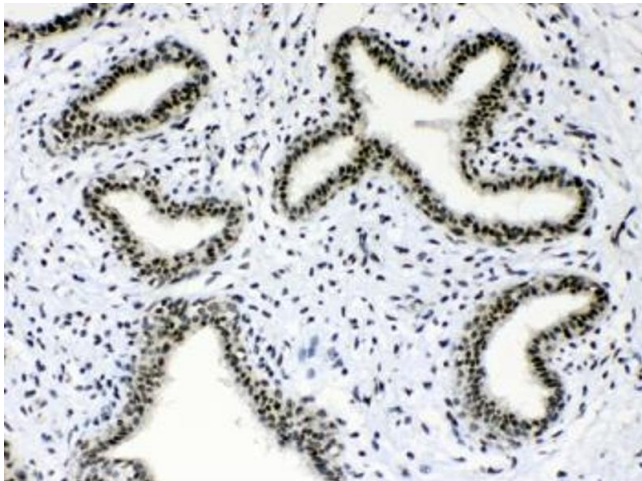
## Handling

Buffer: 0.5 mg/mL if reconstituted with 0.2 mL sterile DI water

Storage: -20 °C

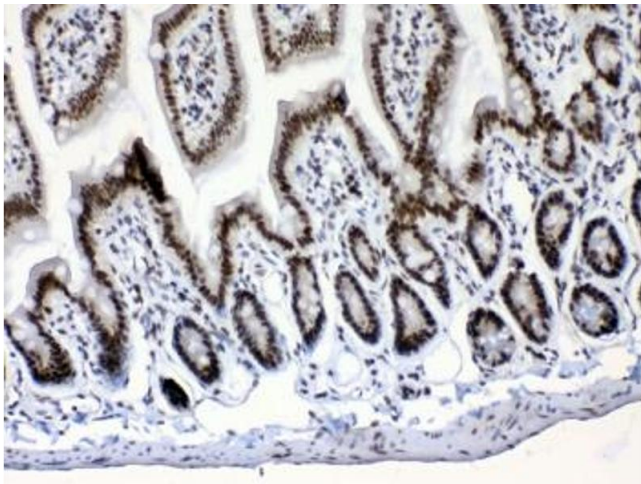
Storage Comment: After reconstitution, the Musashi antibody can be stored for up to one month at 4°C. For long-term, aliquot and store at -20°C. Avoid repeated freezing and thawing.

## Images



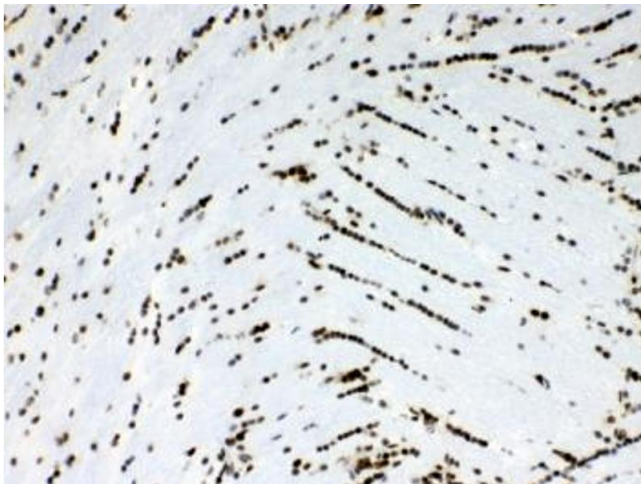
### Immunohistochemistry

**Image 1.** IHC testing of FFPE human breast cancer tissue with Musashi antibody at 1ug/ml. Required HIER: steam section in pH6 citrate buffer for 20 min and allow to cool prior to testing.



#### Immunohistochemistry

**Image 2.** IHC testing of FFPE mouse intestine tissue with Musashi antibody at 1ug/ml. Required HIER: steam section in pH6 citrate buffer for 20 min and allow to cool prior to testing.



#### Immunohistochemistry

**Image 3.** IHC testing of FFPE rat brain tissue with Musashi antibody at 1ug/ml. Required HIER: steam section in pH6 citrate buffer for 20 min and allow to cool prior to testing.

Please check the [product details page](#) for more images. Overall 5 images are available for ABIN5647867.