

Datasheet for ABIN564788

anti-Solute Carrier Family 35 (UDP-GlcNAc/UDP-Glucose Transporter), Member D2 (SLC35D2) (AA 74-131) antibody[Go to Product page](#)**1** Image

Overview

Quantity:	100 µg
Target:	Solute Carrier Family 35 (UDP-GlcNAc/UDP-Glucose Transporter), Member D2 (SLC35D2)
Binding Specificity:	AA 74-131
Reactivity:	Human
Host:	Mouse
Clonality:	Monoclonal
Conjugate:	Un-conjugated
Application:	ELISA, Western Blotting (WB)

Product Details

Purpose:	Mouse monoclonal antibody raised against a partial recombinant SLC35D2.
Immunogen:	SLC35D2 (NP_008932, 74 a.a. ~ 131 a.a) partial recombinant protein with GST tag. MW of the GST tag alone is 26 KDa.
Sequence:	VSKLNKIIHF PDFDKKIPVK LFPLPLLYVG NHISGLSSTS KLSLPMFTVL RKFTIPLT
Clone:	1H5
Isotype:	IgG2a
Cross-Reactivity:	Human
Characteristics:	Antibody Reactive Against Recombinant Protein.

Target Details

Target:	Solute Carrier Family 35 (UDP-GlcNAc/UDP-Glucose Transporter), Member D2 (SLC35D2)
Alternative Name:	SLC35D2 (SLC35D2 Products)
Background:	Full Gene Name: solute carrier family 35, member D2 Synonyms: HFRC1,MGC117215,MGC142139,SQV7L,UGTrel8,hfrc
Gene ID:	11046
NCBI Accession:	NM_007001

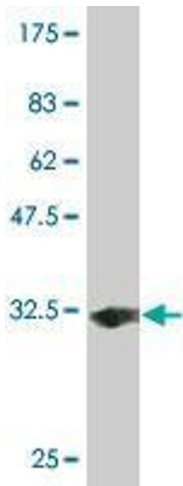
Application Details

Application Notes:	Optimal working dilution should be determined by the investigator.
Restrictions:	For Research Use only

Handling

Buffer:	In 1x PBS, pH 7.4
Handling Advice:	Aliquot to avoid repeated freezing and thawing.
Storage:	-20 °C
Storage Comment:	Store at -20°C or lower. Aliquot to avoid repeated freezing and thawing.

Images



Western Blotting

Image 1. Western Blot detection against Immunogen (32.12 KDa) .