



[Go to Product page](#)

Datasheet for ABIN5647881
anti-MMP11 antibody (AA 104-135)

3 Images

Overview

| | |
|----------------------|--|
| Quantity: | 100 µg |
| Target: | MMP11 |
| Binding Specificity: | AA 104-135 |
| Reactivity: | Human, Mouse, Rat |
| Host: | Rabbit |
| Clonality: | Polyclonal |
| Application: | Western Blotting (WB), Immunohistochemistry (Paraffin-embedded Sections) (IHC (p)) |

Product Details

| | |
|---------------|--|
| Immunogen: | Amino acids 104-135 (RWEKTDLTyrILRFPWQLVQEQVRQTMAEALK) from the human protein were used as the immunogen for the MMP11 antibody. |
| Isotype: | IgG |
| Purification: | Antigen affinity purified |

Target Details

| | |
|-------------------|--|
| Target: | MMP11 |
| Alternative Name: | MMP11 (MMP11 Products) |
| Background: | Stromelysin-3 (SL-3) also known as matrix metalloproteinase-11 (MMP-11) is an enzyme that in humans is encoded by the MMP11 gene. Proteins of the matrix metalloproteinase (MMP) family are involved in the breakdown of extracellular matrix in normal physiological processes, such as embryonic development, reproduction, and tissue remodeling, as well as in disease |

Target Details

processes, such as arthritis and metastasis. Most MMP's are secreted as inactive proproteins which are activated when cleaved by extracellular proteinases. However, the enzyme encoded by this gene is activated intracellularly by furin within the constitutive secretory pathway. Also in contrast to other MMP's, this enzyme cleaves alpha 1-proteinase inhibitor but weakly degrades structural proteins of the extracellular matrix.

UniProt: [P24347](#)

Application Details

Application Notes: Optimal dilution of the MMP11 antibody should be determined by the researcher.\. WB: 0.5-1 μ g/mL,IHC (FFPE): 1-2 μ g/mL

Restrictions: For Research Use only

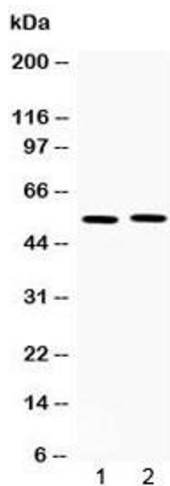
Handling

Buffer: 0.5 mg/mL if reconstituted with 0.2 mL sterile DI water

Storage: -20 °C

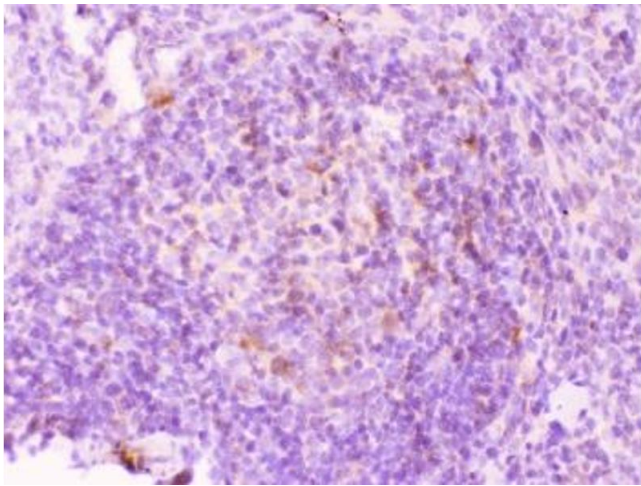
Storage Comment: After reconstitution, the MMP11 antibody can be stored for up to one month at 4°C. For long-term, aliquot and store at -20°C. Avoid repeated freezing and thawing.

Images



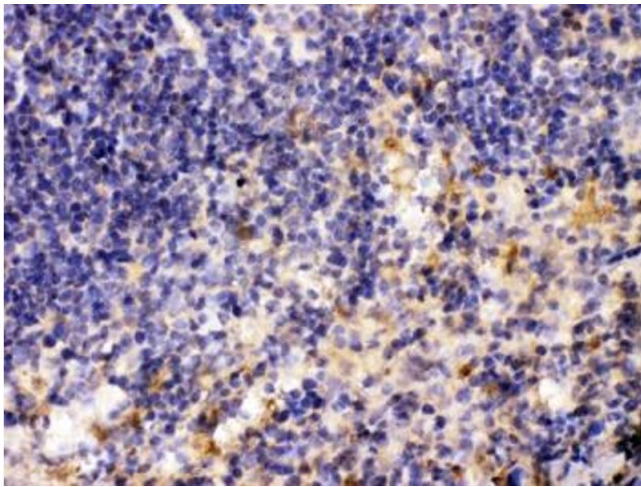
Western Blotting

Image 1. Western blot testing of 1) rat spleen and 2) human MM231 lysate with MMP11 antibody at 0.5ug/ml. Predicted molecular weight ~55 kDa.



Immunohistochemistry

Image 2. IHC testing of FFPE rat spleen tissue with MMP11 antibody at 1ug/ml. Required HIER: steam section in pH6 citrate buffer for 20 min and allow to cool prior to testing.



Immunohistochemistry

Image 3. IHC testing of FFPE mouse spleen tissue with MMP11 antibody at 1ug/ml. Required HIER: steam section in pH6 citrate buffer for 20 min and allow to cool prior to testing.