

Datasheet for ABIN5647895 **anti-PDE5A antibody (AA 20-63)**



[Go to Product page](#)

1 Image

Overview

Quantity:	100 µg
Target:	PDE5A
Binding Specificity:	AA 20-63
Reactivity:	Human, Rat
Host:	Rabbit
Clonality:	Polyclonal
Conjugate:	This PDE5A antibody is un-conjugated
Application:	Western Blotting (WB), Immunohistochemistry (Paraffin-embedded Sections) (IHC (p))

Product Details

Immunogen:	Amino acids 20-63 (QKQQRDQDSVEAWLDDHWDFTFYSYFVRKATREMVNAWFAERVH) from the human protein were used as the immunogen for the PDE5A antibody.
Isotype:	IgG
Purification:	Antigen affinity purified

Target Details

Target:	PDE5A
Alternative Name:	PDE5 (PDE5A Products)
Background:	CGMP-specific phosphodiesterase type 5 is an enzyme from the phosphodiesterase class. It is found in various tissues, most prominently the corpus cavernosum and the retina. It has also been recently discovered to play a vital role in the cardiovascular system. Furthermore, PDE5A

Target Details

also plays a role in signal transduction by regulating the intracellular concentration of cyclic nucleotides. This PDE5A gene is mapped to 4q26.

UniProt: [O76074](#)

Pathways: [Regulation of G-Protein Coupled Receptor Protein Signaling](#)

Application Details

Application Notes: Optimal dilution of the PDE5A antibody should be determined by the researcher.\. WB: 0.5-1 μ g/mL,IHC (FFPE): 1-2 μ g/mL

Restrictions: For Research Use only

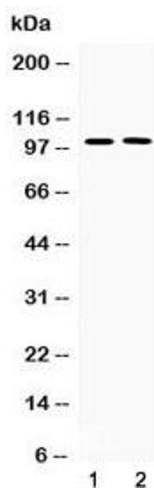
Handling

Buffer: 0.5 mg/mL if reconstituted with 0.2 mL sterile DI water

Storage: -20 °C

Storage Comment: After reconstitution, the PDE5A antibody can be stored for up to one month at 4°C. For long-term, aliquot and store at -20°C. Avoid repeated freezing and thawing.

Images



Western Blotting

Image 1. Western blot testing of 1) rat lung and 2) human PANC1 lysate with PDE5A antibody at 0.5 μ g/ml. Predicted molecular weight ~100 kDa (isoform 1).