

Datasheet for ABIN5647938
anti-Olfactory Receptor, Family 2, Subfamily AE, Member 1 (OR2AE1) (AA 278-312) antibody

[Go to Product page](#)

1 Image

Overview

Quantity:	0.05 mL
Target:	Olfactory Receptor, Family 2, Subfamily AE, Member 1 (OR2AE1)
Binding Specificity:	AA 278-312
Reactivity:	Human
Host:	Rabbit
Clonality:	Polyclonal
Application:	Western Blotting (WB)

Product Details

Immunogen:	A portion of amino acids 278-312 from the C-terminal region of the human protein was used as the immunogen for the OR2AE1 antibody.
Isotype:	Ig Fraction
Purification:	Antigen affinity purified

Target Details

Target:	Olfactory Receptor, Family 2, Subfamily AE, Member 1 (OR2AE1)
Alternative Name:	OR2AE1 (OR2AE1 Products)
Background:	Olfactory receptor 2AE1 is an odorant receptor.
UniProt:	Q8NHA4

Application Details

Application Notes: The stated application concentrations are suggested starting points. Titration of the OR2AE1 antibody may be required due to differences in protocols and secondary/substrate sensitivity.\.

Western Blot: 1:1000

Restrictions: For Research Use only

Handling

Buffer: In 1X PBS, pH 7.4, with 0.09 % sodium azide

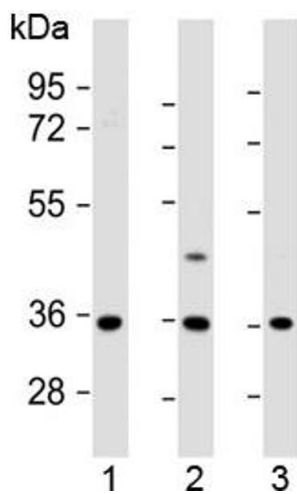
Preservative: Sodium azide

Precaution of Use: This product contains Sodium azide: a POISONOUS AND HAZARDOUS SUBSTANCE which should be handled by trained staff only.

Storage: -20 °C

Storage Comment: Aliquot the OR2AE1 antibody and store frozen at -20°C or colder. Avoid repeated freeze-thaw cycles.

Images



Western Blotting

Image 1. Western blot testing of human 1) U-87 MG, 2) U-2 OS and 3) MDA-MB-231 cell lysate with OR2AE1 antibody at 1:1000. Predicted molecular weight ~37 kDa.