

Datasheet for ABIN5647959
anti-ABCC3 antibody (AA 899-925)[Go to Product page](#)

2 Images

Overview

Quantity:	0.08 mL
Target:	ABCC3
Binding Specificity:	AA 899-925
Reactivity:	Human
Host:	Rabbit
Clonality:	Polyclonal
Conjugate:	This ABCC3 antibody is un-conjugated
Application:	Western Blotting (WB), ELISA, Immunohistochemistry (IHC), Flow Cytometry (FACS)

Product Details

Immunogen:	A portion of amino acids 899-925 from the human protein was used as the immunogen for this ABCC3 antibody.
Isotype:	Ig Fraction
Purification:	Antigen affinity purified

Target Details

Target:	ABCC3
Alternative Name:	ABCC3 (ABCC3 Products)
Background:	Canalicular multispecific organic anion transporter 2 is a member of the superfamily of ATP-binding cassette (ABC) transporters. ABC proteins transport various molecules across extra- and intra-cellular membranes. ABC genes are divided into seven distinct subfamilies (ABC1,

Target Details

MDR/TAP, MRP, ALD, OABP, GCN20, White). This protein is a member of the MRP subfamily which is involved in multi-drug resistance. The specific function of this protein has not yet been determined, however, this protein may play a role in the transport of biliary and intestinal excretion of organic anions. Alternatively spliced variants which encode different protein isoforms have been described, however, not all variants have been fully characterized.

UniProt: [O15438](#)

Application Details

Application Notes: Western blot: 1:1000,IHC (Paraffin): 1:10-1:50,Flow Cytometry: 1:10-1:50

Restrictions: For Research Use only

Handling

Buffer: In 1X PBS, pH 7.4, with 0.09 % sodium azide

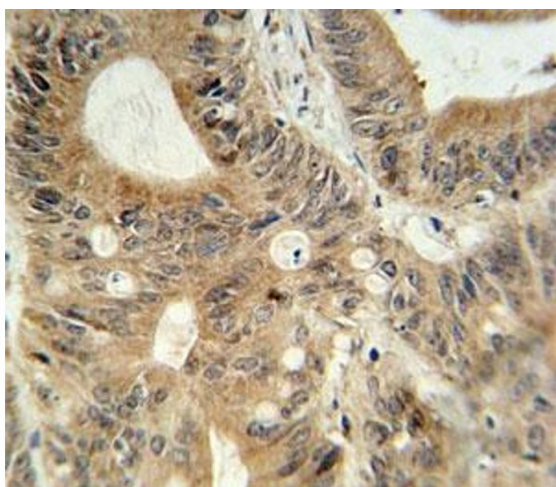
Preservative: Sodium azide

Precaution of Use: This product contains Sodium azide: a POISONOUS AND HAZARDOUS SUBSTANCE which should be handled by trained staff only.

Storage: -20 °C

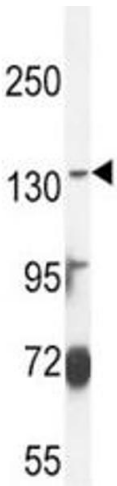
Storage Comment: Aliquot the ABCC3 antibody and store frozen at -20°C or colder. Avoid repeated freeze-thaw cycles.

Images



Immunohistochemistry

Image 1. ABCC3 antibody immunohistochemistry analysis in formalin fixed and paraffin embedded human colon carcinoma.



Western Blotting

Image 2. ABCC3 antibody western blot analysis in MDA-MB435 lysate