

Datasheet for ABIN5647969

anti-Alpha-amylase 1 antibody (AA 20-50)[Go to Product page](#)**1** Image

Overview

| | |
|----------------------|--|
| Quantity: | 100 µg |
| Target: | Alpha-amylase 1 (AMY1) |
| Binding Specificity: | AA 20-50 |
| Reactivity: | Human, Mouse, Rat |
| Host: | Rabbit |
| Clonality: | Polyclonal |
| Application: | Western Blotting (WB), Immunohistochemistry (Paraffin-embedded Sections) (IHC (p)) |

Product Details

| | |
|---------------|---|
| Immunogen: | Amino acids 20-50 (NTQQGRTSIVHLFEWRWVDIALECERYLAPK) from the human protein were used as the immunogen for the Alpha Amylase antibody. |
| Isotype: | IgG |
| Purification: | Antigen affinity purified |

Target Details

| | |
|-------------------|---|
| Target: | Alpha-amylase 1 (AMY1) |
| Alternative Name: | Alpha Amylase 1 (AMY1 Products) |
| Background: | Amylase is an enzyme that catalyses the breakdown of starch into sugars. Amylase is present in human saliva, where it begins the chemical process of digestion. By in situ hybridization combined with high resolution cytogenetics, the amylase gene is mapped to 1p21. Amylase enzymes find use in bread making and to break down complex sugars such as starch (found in |

Target Details

flour) into simple sugars. Yeast then feeds on these simple sugars and converts it into the waste products of alcohol and CO₂.

UniProt: [P04745](#)

Application Details

Application Notes: Optimal dilution of the Alpha Amylase antibody should be determined by the researcher.\. WB: 0.5-1 µg/mL,IHC (FFPE): 1-2 µg/mL

Restrictions: For Research Use only

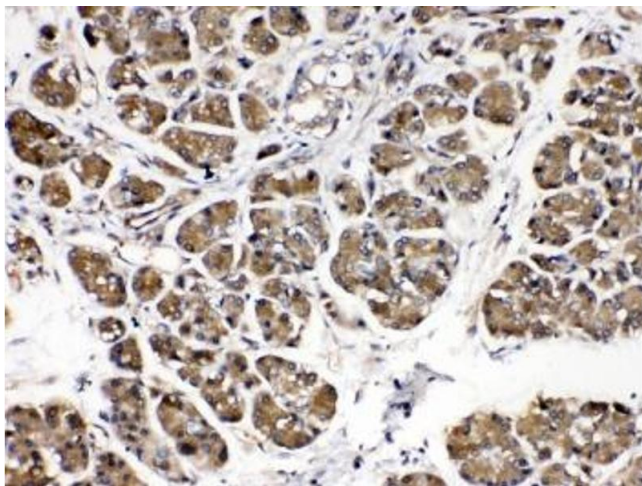
Handling

Buffer: 0.5 mg/mL if reconstituted with 0.2 mL sterile DI water

Storage: -20 °C

Storage Comment: After reconstitution, the Alpha Amylase antibody can be stored for up to one month at 4°C. For long-term, aliquot and store at -20°C. Avoid repeated freezing and thawing.

Images



Immunohistochemistry

Image 1. IHC testing of human pancreatic cancer tissue with Alpha Amylase antibody at 0.5ug/ml. Required HIER: steam section in pH6 citrate buffer for 20 min and allow to cool prior to testing.