



Datasheet for ABIN564801  
**anti-RAPGEF4 antibody (AA 1-110)**



[Go to Product page](#)

3 Images

Overview

Quantity:	100 µg
Target:	RAPGEF4
Binding Specificity:	AA 1-110
Reactivity:	Human
Host:	Mouse
Clonality:	Monoclonal
Conjugate:	This RAPGEF4 antibody is un-conjugated
Application:	Western Blotting (WB), ELISA

Product Details

Purpose:	Mouse monoclonal antibody raised against a partial recombinant RAPGEF4.
Immunogen:	RAPGEF4 (AAH24004, 1 a.a. ~ 110 a.a) partial recombinant protein with GST tag. MW of the GST tag alone is 26 KDa.
Sequence:	MVAAHAAHSS SSAEWIACLD KRPLERSSD VDIIFTRLKE VKAFEKFHPN LLHQICLCGY YENLEKGITL FRQGDIGTNW YAVLAGSLDV KVSETSSHQD AVTICTLGIG
Clone:	1C11
Isotype:	IgG2b
Cross-Reactivity:	Human
Characteristics:	Antibody Reactive Against Recombinant Protein.

## Target Details

Target:	RAPGEF4
Alternative Name:	RAPGEF4 ( <a href="#">RAPGEF4 Products</a> )
Background:	Full Gene Name: Rap guanine nucleotide exchange factor (GEF) 4 Synonyms: CAMP-GEFII,CGEF2,EPAC2,Nbla00496
Gene ID:	11069
Pathways:	<a href="#">Hormone Transport, Smooth Muscle Cell Migration</a>

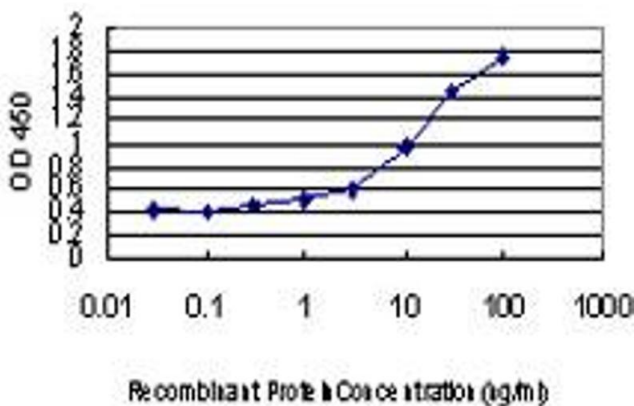
## Application Details

Application Notes:	Optimal working dilution should be determined by the investigator.
Restrictions:	For Research Use only

## Handling

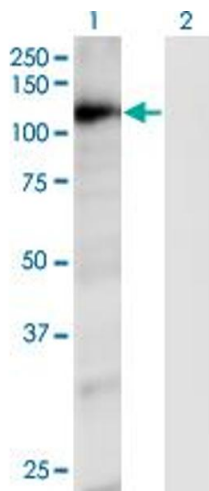
Buffer:	In 1x PBS, pH 7.4
Handling Advice:	Aliquot to avoid repeated freezing and thawing.
Storage:	-20 °C
Storage Comment:	Store at -20°C or lower. Aliquot to avoid repeated freezing and thawing.

## Images



### ELISA

**Image 1.** Detection limit for recombinant GST tagged RAPGEF4 is approximately 0.3ng/ml as a capture antibody.

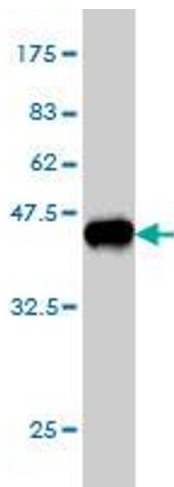


### Western Blotting

**Image 2.** Western Blot analysis of RAPGEF4 expression in transfected 293T cell line by RAPGEF4 monoclonal antibody (M01), clone 1C11.

Lane 1: RAPGEF4 transfected lysate (Predicted MW: 115.5 KDa).

Lane 2: Non-transfected lysate.



### Western Blotting

**Image 3.** Western Blot detection against Immunogen (37.73 KDa).